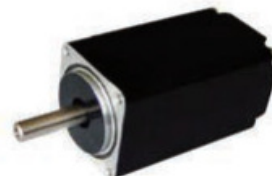


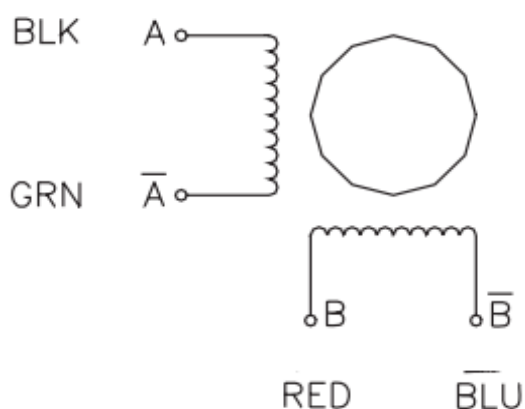
## Hybrid stepper motor 17HS

<u>Allgemeine Daten</u>	<u>Standard Data</u>					
Ausführung	Model	17HY8401	17HS8402	17HS8403	17HS9403	17HS6403
Gewicht [g]	Weight [g]	350	350	350	350	500
Motorlänge [mm]	Body lengths [mm]	48	48	48	48	63
Welle	Shaft dimension	Ø5 x 24mm				
Umgebungstemperatur	Ambient temperature	-20...+50°C				
Einbaulage	Mounting	beliebig / any				
Leitungslänge	Lead wire lengths	300mm				
Wicklungsausführung	Winding tpye	bipolar				
Schrittwinkel	Step angle	1.8°				

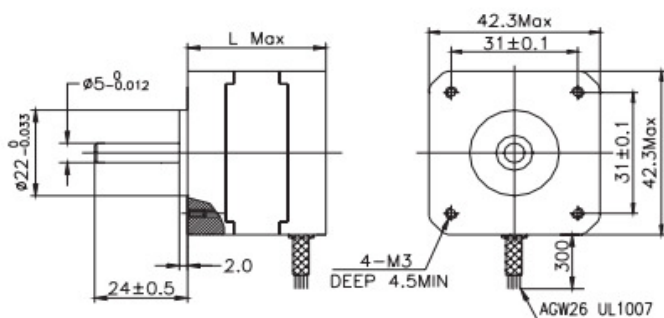


<u>Leistungsdaten</u>	<u>Performance Data</u>					
Nennstrom [A]	Rated Current [A]	1,7	1,3	2,3	0,4	2,3
Phasenwiderstand [Ω]	Phase resistance [Ω]	1,8	3,2	1,2	3	1,5
Haltemoment [cNm]	Holding torque [cNm]	52	52	46	34	80
Rastmoment [cNm]	Detent torque [cNm]	2,6	2,6	2,6	2,6	4
Rotorträgheitsmoment [gcm <sup>2</sup> ]	Rotor inertia [gcm <sup>2</sup> ]	68	68	68	68	85

### Anschlüsse      Wiring diagramm



### Abmessungen      Dimension



#### Description:

Model	Motor Length
17HS2xxx	28mm
17HS3xxx	34mm
17HS4xxx	40mm
17HS8xxx	48mm
17HS9xxx	58mm
17HS6xxx	63mm