

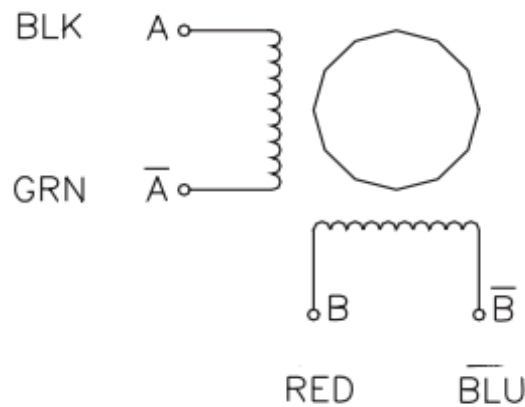
Hybrid stepper motor 23HS

<u>Allgemeine Daten</u>		<u>Standard Data</u>				
Ausführung	Model	23HS6404	23HS7404	23HS8404	23HS1404	23HS2404
Gewicht [g]	Weight [g]	680	850	1050	1250	1400
Motorlänge [mm]	Body lengths [mm]	56	64	76	100	112
Welle	Shaft dimension	Ø6,35 x 21mm				
Umgebungstemperatur	Ambient temperature	-20...+50 °C				
Einbaulage	Mounting	beliebig / any				
Leitungslänge	Lead wire lengths	300mm				
Wicklungsausführung	Winding tpye	bipolar				
Schrittwinkel	Step angle	1,8°				

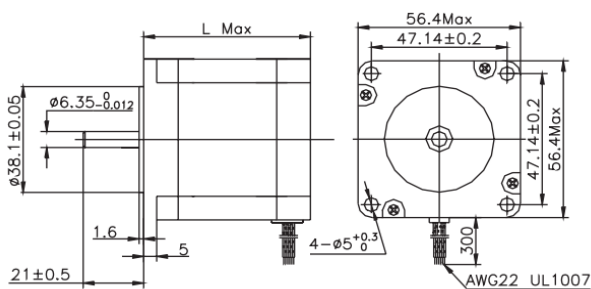


<u>Leistungsdaten</u>		<u>Performance Data</u>				
Nennstrom [A]	Rated Current [A]	4,2	4,2	4,2	4,2	4,2
Phasenwiderstand [Ω]	Phase resistance [Ω]	0,4	0,55	0,5	0,8	0,9
Haltemoment [cNm]	Holding torque [cNm]	110	150	180	250	250
Rastmoment [cNm]	Detent torque [cNm]	3,5	5	6	10	12
Rotorträgheitsmoment [gcm ²]	Rotor inertia [gcm ²]	280	380	440	680	800

Anschlüsse Wiring diagramm



Abmessungen Dimension



Description:

Model	Motor Length
23HS0xxx	41mm
23HS4xxx	45mm
23HS5xxx	51mm
23HS6xxx	56mm
23HS7xxx	64mm
23HS8xxx	76mm
23HS1xxx	100mm
23HS2xxx	112mm