

# DC Gearmotors UGY – Distribution Range

## Planetary Gearbox UGY with DC Motor NF213G

Voltage (Vdc)	24
Max. torque (cNm)	30



### Standard Data

Ambient temperature operation	°C -20 ... +60
Ambient temperature storage	°C -20 ... +60
Rotor stalling	not permissible
Approval	standard
Electrical connection	leadwire length 165 ± 10mm with connector JST
Mounting	any position
Weight	55...60 g
Lateral force permissible	10 N (10mm distance from flange)
Output shaft	Ø 4 x 14,8 (length to flange) with flat
Bearings	sintered bronze, self-lubricating

### Order reference

Motor type	JP	DC Motor (brushed)	JP	2	C	N	M4	Y	XXX	N	E	N	XXX
Motor size	2	diameter 24.4 mm											
Motor version	C	24V ; no-load speed 5900 rpm (NF213G)											
Approval	N	standard											
Voltage	M4	24Vdc											
Gearbox size	Y	UGY (planetary)											
Gear ratio	04A	ratio 4,4											
	19A	ratio 19,2											
	84A	ratio 84,5											
Connection	N	leadwire length 165 ± 10mm with connector JST terminal SPH-002T-P0.5L and housing PHR-2											
Indication adder	E	standard (gearbox without slipping clutch)											
Shaft end	N	Ø 4 x 14,8 with flat (see drawing)											
Indication adder	ZG2	1 stage (ratio 4,4)											
	ZG3	2 stages (ratio 19,2)											
	ZG4	3 stages (ratio 84,5)											

# DC Gearmotors UGY for Distribution

## Technical Data

Motor data of NF213G:

Voltage supply	V	24
No-load motor speed	rpm	5900 ± 10%
Rated motor speed	rpm	4800 ± 10%
Rated motor current	mA	90
Rated motor torque	cNm	0,25

Gearmotor data:

Gear ratio		4,4	19,2	84,5	
Rated output speed*	rpm	1100	250	56	± 15%
Rated output torque	cNm	1	4	14	
Max permissible torque**	cNm	10	20	30	

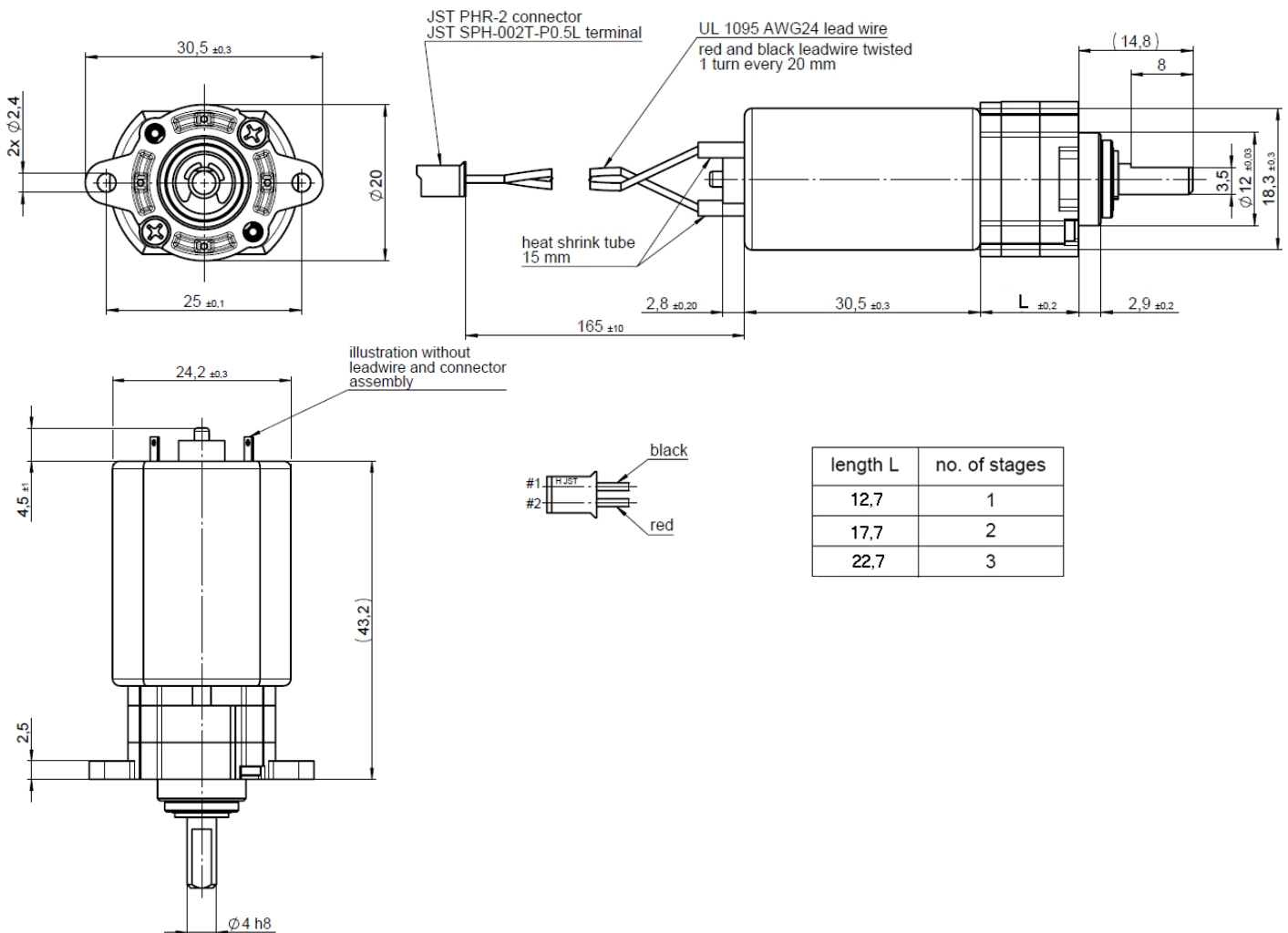
Continuous duty cycle permissible at rated torque.

\*At normal room temperature 23°C, motor not warmed up, rated voltage, can vary more if near to lifetime end

\*\*Maximum permissible gearbox loading

All values approximate. Must be tested under specific operating conditions in application.

## Dimensions



length L	no. of stages
12,7	1
17,7	2
22,7	3