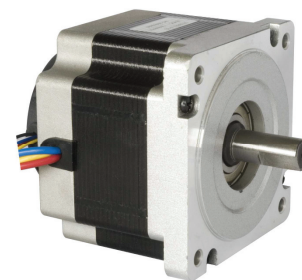


## General Specifications

## 86BLF Series

Winding Type ————— Star  
 Hall Effect angle ————— 120° electrical angle  
 Insulation Class ————— B  
 Ambient Temperature Range ——— -20°C~+50°C  
 Insulation Resistance ————— 100MΩ Min . 500V DC  
 Dielectric Strength ————— 750V AC 1minute



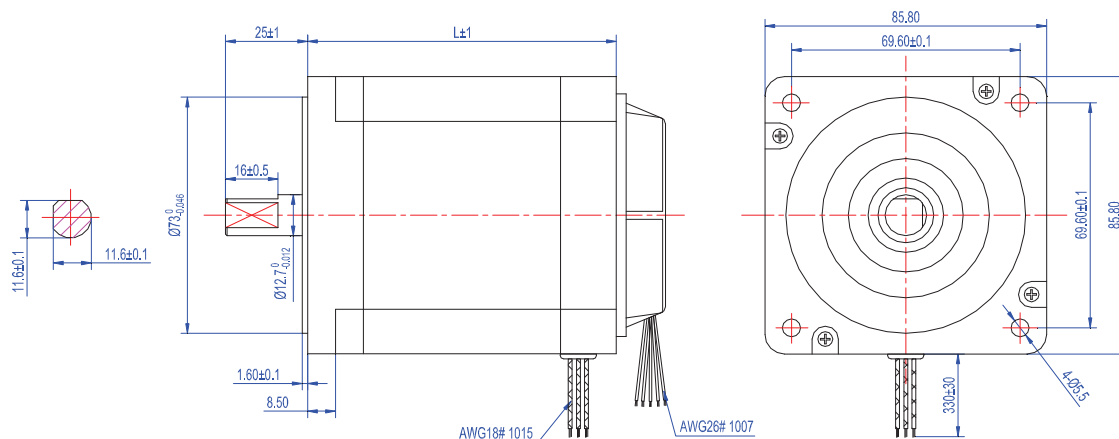
### Electrical Specifications

Model		86BLF07	86BLF06	86BLF01	86BLF02	86BLF03	86BLF04
Number of Poles		8					
Number of Phases		3					
Rated Voltage	VDC	48	48	48	48	48	48
Rated speed	RPM	3000	3000	3000	3000	3000	3000
Rated Torque	N-m	2.1	1.8	1.4	1.05	0.7	0.35
Rated Current	Amps	22	18	14	9.6	6.6	3.9
Output Power	Watts	660	550	440	330	220	110
Peak Torque	N-m	6.3	5.4	4.2	3.2	2.1	1.05
Peak Current	Amps	55	46	38.0	29.0	19.8	10.8
Torque constant	N-m/Amps	0.116	0.115	0.115	0.115	0.112	0.11
Back EMF	V/kRPM	12.2	12.0	12.0	12.0	11.8	11.5
Rotor inertia	g · cm <sup>2</sup>	1850	1550	1250	950	650	350
Body Length	mm	124	109	94	81	67	57
Mass	kg	2.75	2.75	2.75	2.2	1.75	1.1

Caution 1: Peak Torque is provided for the purpose of performance calculations only. Operate near , or at this condition will result in motor damaged.

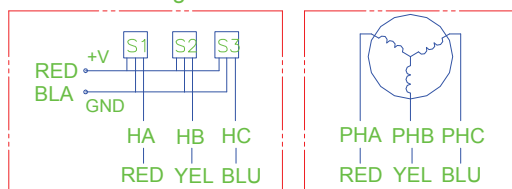
Note: We can also manufacture products according to customer is requirements.

### Mechanical Dimensions



### Wiring diagram

#### Connection diagram:



Hall sensor cable  
 Note: hall sensor power supply  
 voltage +5 to +20VDC

Wiring cable