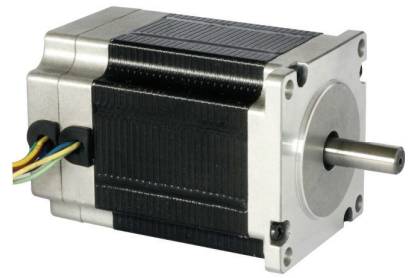


General Specifications

Winding Type	Star
Hall Effect angle	120° electrical angle
Insulation Class	B
Ambient Temperature Range	-20°C~+50°C
Insulation Resistance	100MΩ Min . 500V DC
Dielectric Strength	700V AC 1minute

57BLF Series



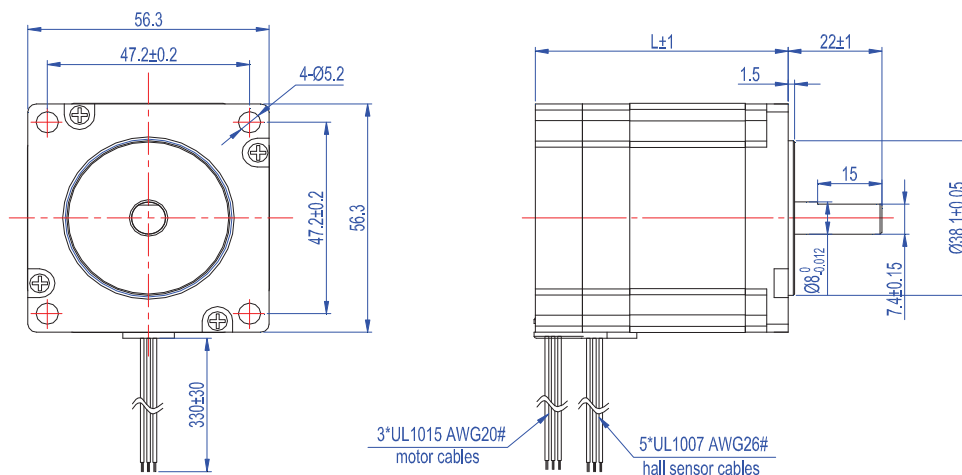
Electrical Specifications

Model		57BLF01	57BLF02	57BLF03	57BLF04
Number of Poles		8			
Number of Phases		3			
Rated Voltage	VDC	24	24	24	36
Rated speed	RPM	3000	3000	3000	3000
Rated Torque	N-m	0.2	0.4	0.6	0.8
Rated Current	Amps	4	7.8	12	12.5
Output Power	Watts	63	125	188	250
Peak Torque	N-m	0.6	1.2	1.8	2.4
Peak Current	Amps	12	23.5	36	45
Torqueconstant	N-m/Amps	0.065	0.066	0.066	0.066
Back EMF	V/kRPM	6.23	6.3	6.3	6.3
Rotor inertia	g · cm ²	120	170	220	270
Body Length	mm	48	69	90	111
Mass	kg	0.65	1.0	1.4	2.0

Caution 1: Peak Torque is provided for the purpose of performance calculations only. Operate near , or at this condition will result in motor damaged.

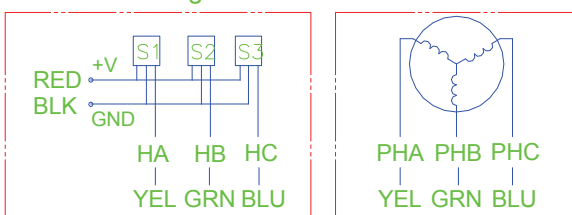
Note: We can also manufacture products according to customer is requirements.

Mechanical Dimensions



Wiring diagram

Connection diagram:



Hall sensor cable

Note: hall sensor power supply voltage +5 to +20VDC

Wiring cable