

LS-36PA/39BYG

Housing Material: Metal

Backlash at No Load: $\leq 1.5^\circ$

Bearing at Output: Ball or Sleeve

Permissible Overhung Load: $\leq 10\text{kg}$

Permissible Thrust Load: $\leq 5\text{kg}$

Max.Radial Play: $\leq 0.05\text{mm}$

Max.Thrust Play: $\leq 0.3\text{mm}$



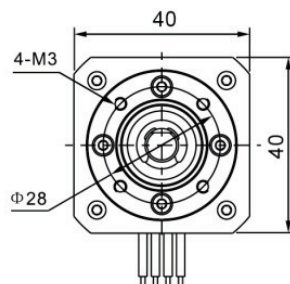
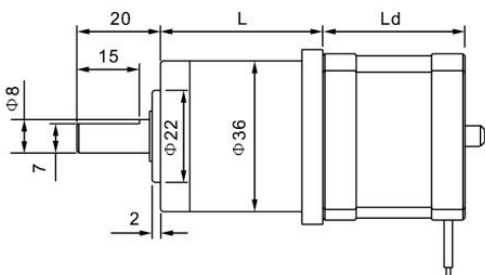
Motor Data

Model	Step Angle	Length (Ld)	Phase Voltage	Phase Current	Phase Resistance	Phase Inductance	Holding Torque	Lead Wire
		mm	V	A	Ω	mH	g.cm	
39BYGH20(M)-040-4A/B	1.8	20	5.6	0.40	14	11	800	4
39BYGH26(M)-046-4A/B	1.8	26	6.0	0.46	13	29	1000	4
39BYGH31(M)-046-4A/B	1.8	31	6.37	0.46	14	28	1400	4
39BYGH34(M)-057-4A/B	1.8	34	6.8	0.57	12	31	1800	4
39BYGH38(M)-056-4A/B	1.8	38	6.4	0.56	15	28	2400	4
39BYGH44(M)-035-4A/B	1.8	44	15.4	0.35	44	80	3000	4

Gearbox Data

Reduction Ratio(X:1)	4	5	13	19	27	51	71	100	139
Number of gear trains	1	1	2	2	2	3	3	3	3
Rated output torque(kg.cm)	20	20	30	30	30	40	40	40	40
Gear Box Length(mm)	30	30	38	38	38	46	46	46	46

Mechanical Dimensions



4(6)Leads

