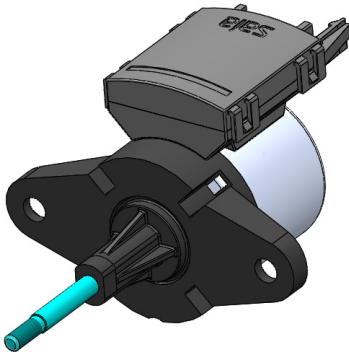


saia ZAG 024



Electrical Data

Operating voltage:	24VDC \pm 10%
Power consumption:	5VA
Maximum current:	250mAmps
Duty cycle:	25%
Standby current:	6mAmps
Control signal:	0...10V

The control signal in the range from 0.5V to 10V is proportional to the working range of 10mm. The range between 0 and 0.5V is not used to prevent disturbances.

Input impedance of control signal:	10k Ω \pm 20%
Electrical connection:	Connector Lumberg RAST2.5 / type 3521 04 Pin assignment according to figure 1

Ambient Conditions

Operating temperature range:	-15...70°C
Storage temperature range:	-20...80°C
Climate class:	“widespread” according to DIN IEC 60721-2-1:1992-07

Compact Stepper Drive Linear

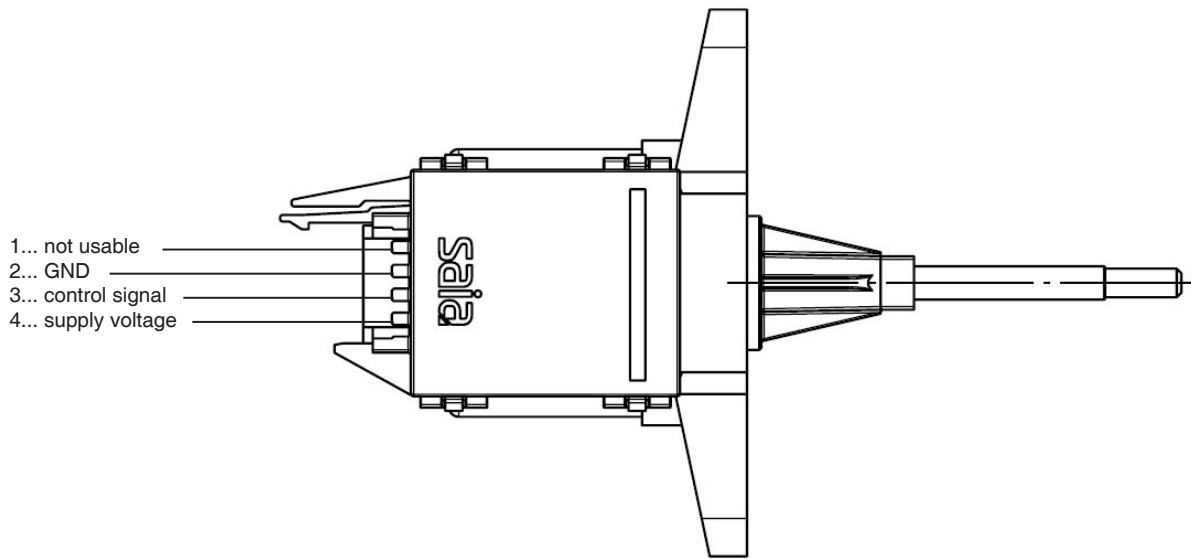


Figure 1: Pin Assignment

Mechanical Data

Stroke:	10mm The nominal stroke is set by software
Reference position (0V):	Spindle is moved out
Force:	>30N Guaranteed minimum force under the defined working conditions
Speed:	4 mm/s $\pm 5\%$

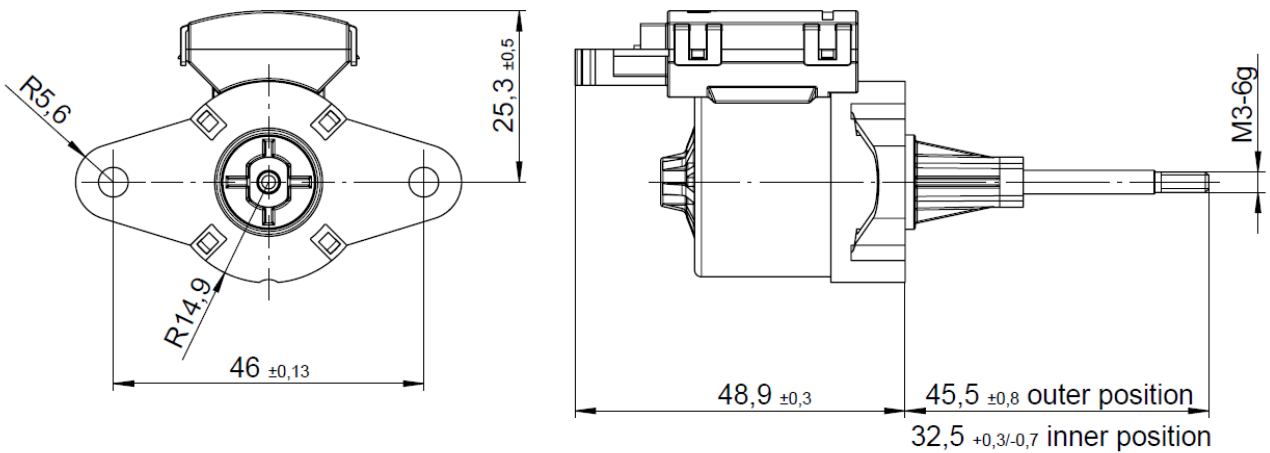


Figure 2: Technical Drawing