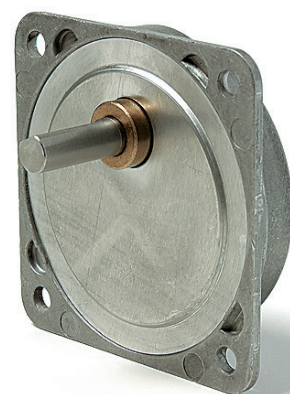


## UGV

Dimensions (mm)	70 x 70
Height (mm)	17
Max. torque (cNm)	500
Ratios	8 <sup>1/3</sup> ... 2000
Internal slipping clutch	none
Standard shaft (mm)	Ø 8 x 12
Weight (g)	130
Motor combination	Series UB, UD, UF



## Standard Data

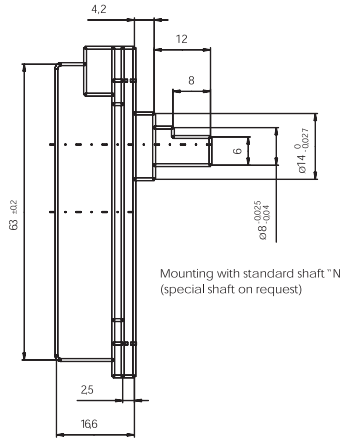
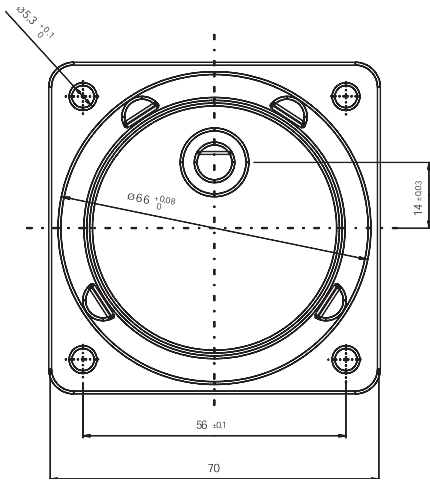
Mounting	any position
Axial thrust $F_A$	100 N
Lateral force $F_R$	400 N
Output shafts	Ø 8 x 12, other on request
Climatic class	wide-spread according to DIN IEC 60721-2-1
Ambient temperature operation	°C -15 ... +55
Ambient temperature storage	°C -40 ... +80

Ratios 8<sup>1/3</sup> 16<sup>2/3</sup> 25 41<sup>2/3</sup> 83<sup>1/3</sup> 100 125 250 500 2000

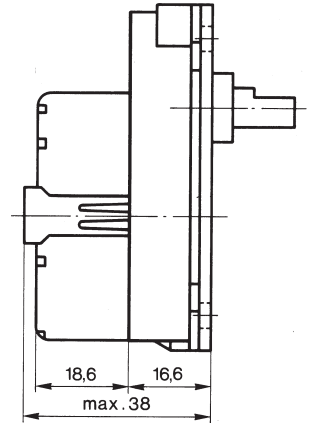
## Order Reference

Type	Gearbox	UGV	100	N	N
Ratio	100				
Slipping clutch	N	Without slipping clutch			
Shaft end	N	Ø 8 x 12, other on request			

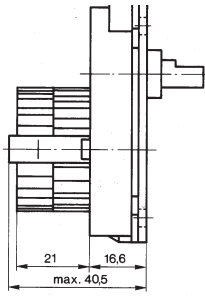
Dimensions



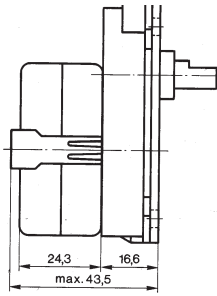
UDS 1..V



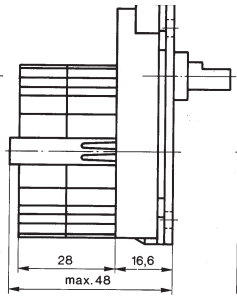
UBR 1/UBR 2..V



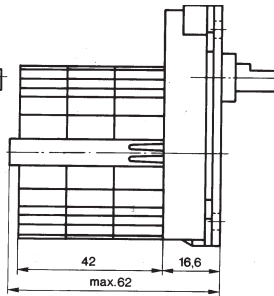
UDR 1..V



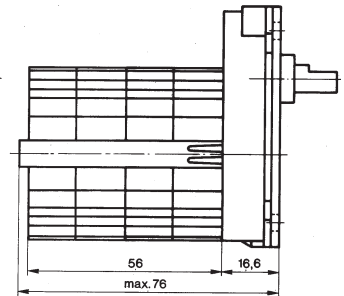
UFM 1/UFU1/UFR 1..V



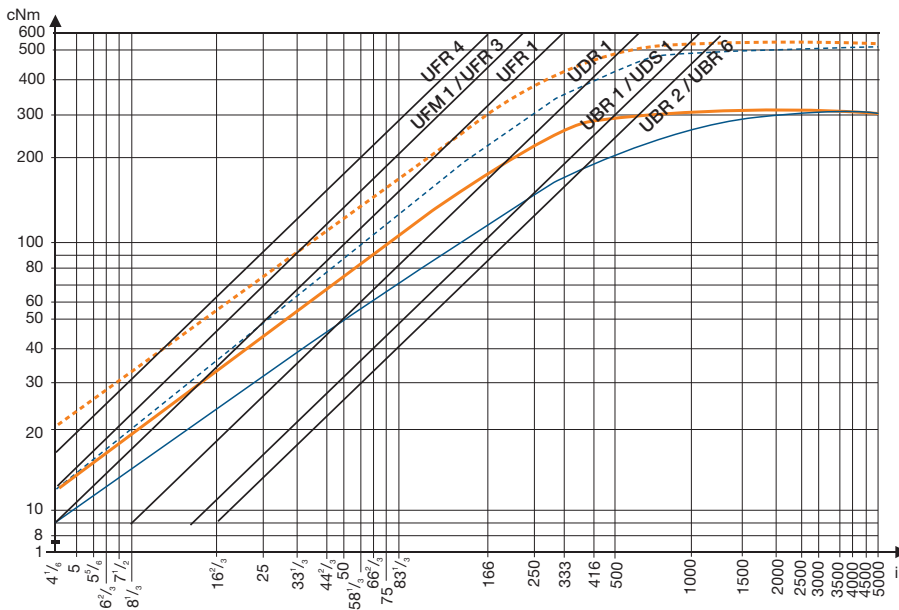
UFR 3..V



UFR 4..V



## Torque / ratio / life graph



motor torque with consideration for gear efficiency \_\_\_\_\_

In combination with motors n=250 rpm, continuous operation and T<sub>ambient</sub>

■ 10000 h ————  
■ 1000 h - - - - -

In combination with motors n=500 rpm, continuous operation and T<sub>ambient</sub>

■ 10000 h ————  
■ 1000 h - - - - -