

Ledex® C Frame Size C8M-L — DC Operation

Magnetic Latching

Part Number: C8M-L - **X** **XX** - M-36

All catalogue products manufactured after April 1, 2006 are RoHS Compliant

Select coil from performance chart below

- Plunger pole face:
- 1 Flat Face
 - 2 40° Reverse Conical

Specifications

Operation	Pull
Dielectric Strength	500 VRMS for one second
Unlatch Voltage	See schematic and coil data below
Magnet Holding Force	Flat Face: 1.60 lb (with return spring) 40° Reverse Conical: 1.25 lb (with return spring)
Spring Force	0.53 lb/in; 0.26 lb latched operation
Coil Insulation	Class "B": 130°C max. temperature standard. Other temperature classes are available
Coil Termination	(1) - 1/4" QC; (1) - 3/16" QC
Plunger Pole Face	Flat face with return spring; 40° reverse conical with return spring (Other options available)
Plunger Weight	11.3 g
Total Weight	45.4 g
Dimensions	See page 45

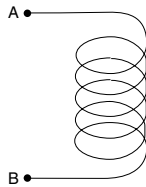
- Well-suited for battery operation.



See the "Battery Operated Solenoids" section for complete information.

Coil Polarity

- Latch: A+ B-
Unlatch: A- B+
(A) 1/4" QC terminal
(B) 3/16" QC terminal



Performance

Maximum Duty Cycle	100%	50%	25%	10%
Maximum ON Time (sec)	∞	286	92	27
Watts (@ 20°C)	3.6	7	14	35
Ampere Turns (@ 20°C)	464	657	929	1470

Coil Data

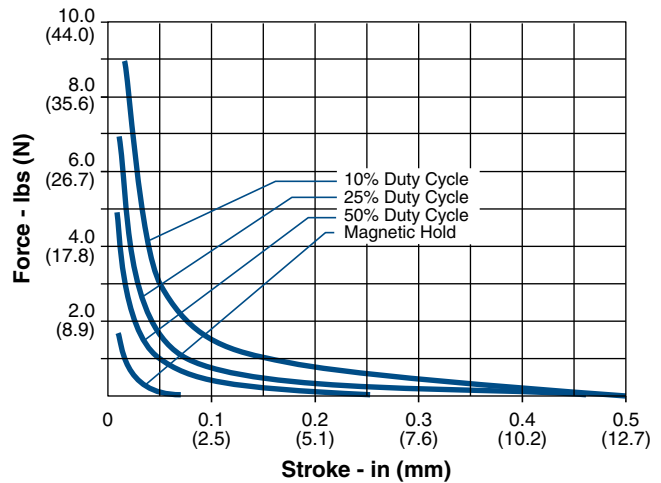
Part Number	Resistance (@20°C)	Ref # Turns	VDC (Nom)	VDC (Nom)	VDC (Nom)	VDC (Nom)
C8M-L-X76-M-36	2.56	404	3	4.2	5.9	9.3
C8M-L-X73-M-36	9.30	752	6	8.5	12	19
C8M-L-X74-M-36	23.2	1252	9	12.7	18	28.5
C8M-L-X72-M-36	37.12	1484	12	17	24	38
C8M-L-X71-M-36	150.73	2736	24	34	48	76
C8M-L-X70-M-36	621.54	5544	48	68	96	152
C8M-L-X69-M-36	3824	15035	120	164	231	366

NOTES:

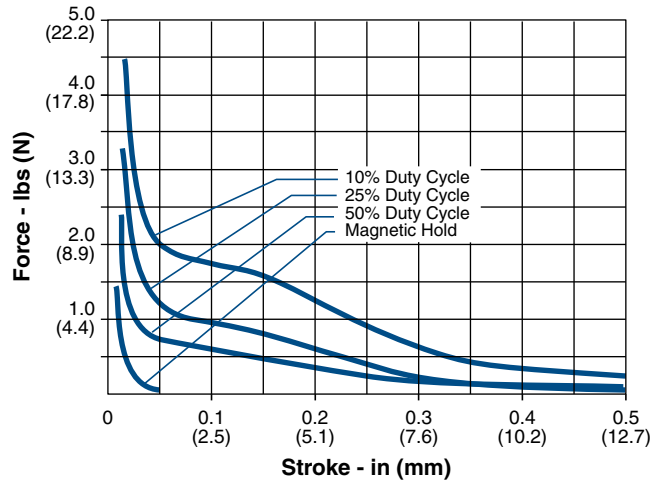
1. All data is typical.
2. Force testing is done with the solenoid in the horizontal position.
3. All data reflects operation with no heatsink.
4. Other coil terminations available.

Force values for reference only.

Typical Force with Flat Face (net with spring @ 20°C)



Typical Force with 40° Reverse Conical (net with spring @ 20°C)



How to Order

Select the part number from the table provided. (For example, to order a 25% duty cycle unit with a 40° reverse conical plunger pole face rated at 48 VDC, specify C8M-L-271-M-36.

Please see www.ledex.com (click on Stock Products tab) for our list of stock products available through our distributors.

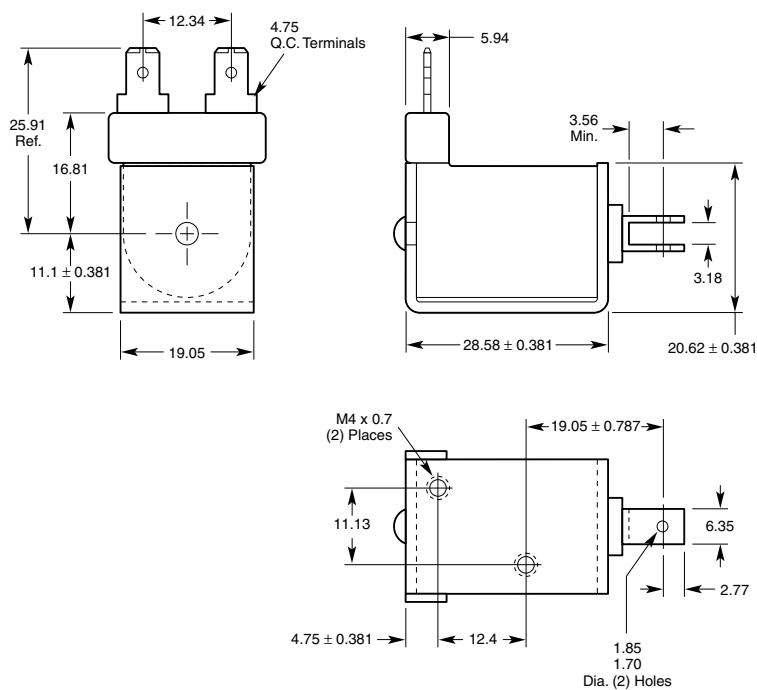
All specifications subject to change without notice.

Ledex® C Frame Dimensions

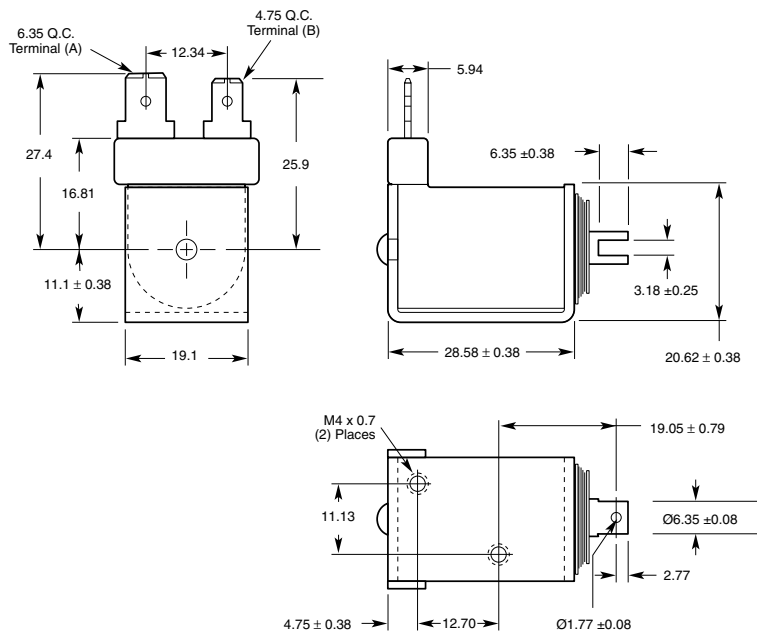
mm

All solenoids are illustrated in energised state

C8M



C8M-L



LINEAR Open Frame

All specifications subject to change without notice.