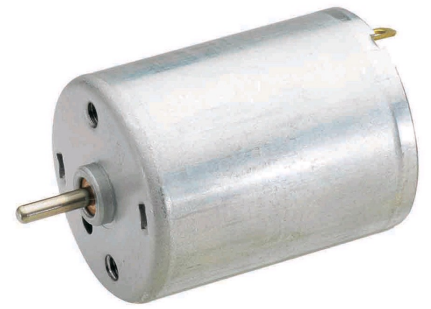


Characteristics:

High Power DC motor

Specifications:

Dimensions	: Ø 24.4 X 30.8 mm
Shaft Diameter	: Ø 2.000 mm
Input Voltage	: 12.0 V DC
No Load Speed	: 8200 rpm
No Load Current	: 0.65 A
Stall Torque	: 25.50 mNm
Stall Current	: 2.10 A
Maximum Output Power	: 5.50 W
Maximum Efficiency	: 62 %
Speed at Maximum Efficiency	: 7000 rpm
Life (typical)	: 50 hr
Weight	: 52 g
Operation Temperature	: -10 to 55 °C
Storage Temperature	: -20 to 80 °C
Electrical Connection	: Terminal

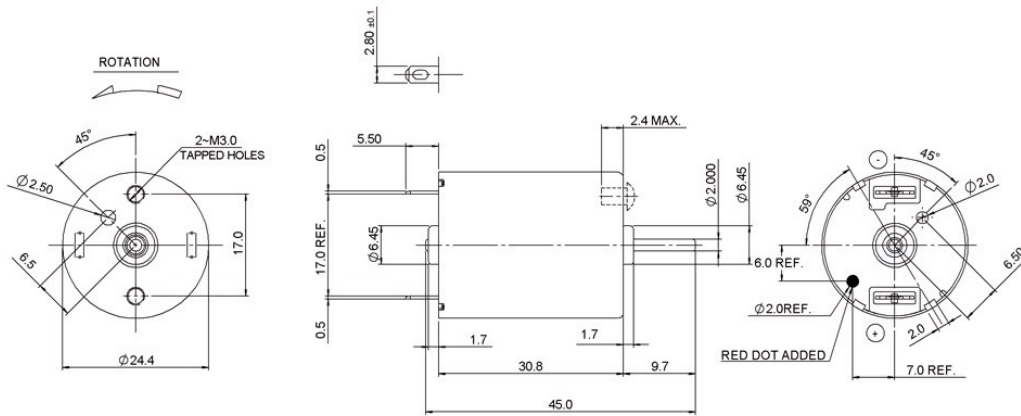
**Performance Data:**

	No Load	Stall	Max Efficiency	Max Power
Current (A)	0.65	2.10	0.37	1.10
Efficiency (%)	-	-	62	-
Output Power (W)	-	-	2.80	5.50
Speed (rpm)	8200	-	7000	4100
Torque (mNm)	-	25.50	3.80	12.80

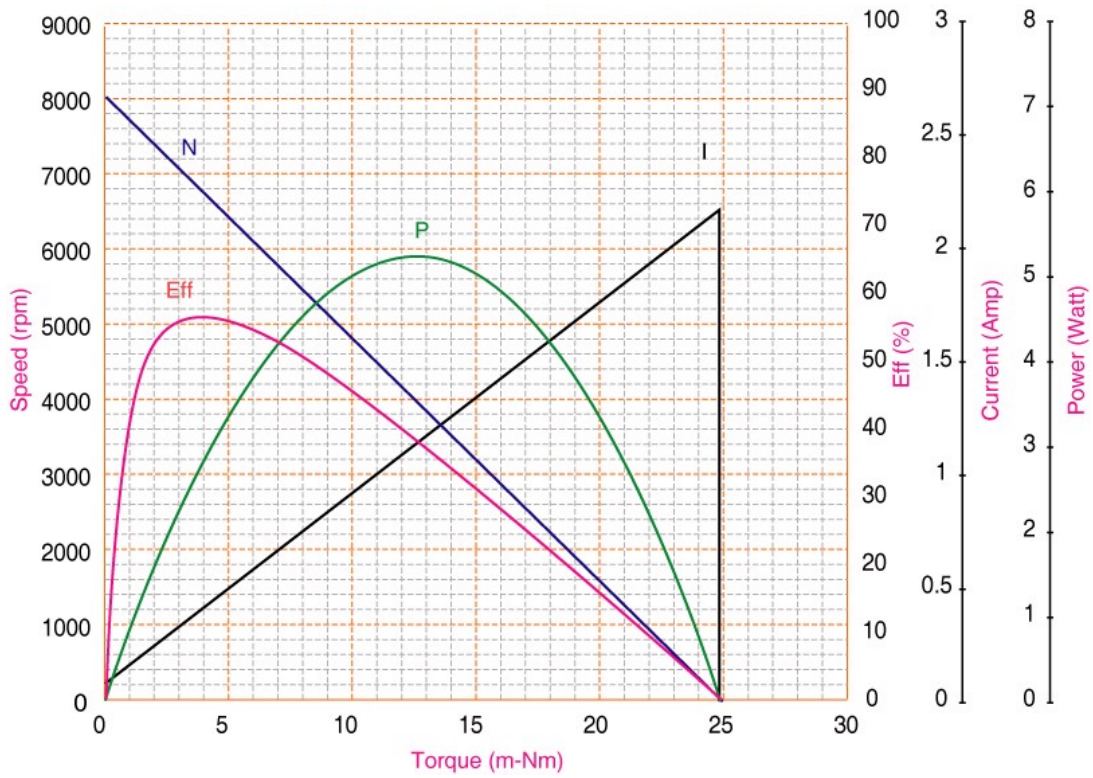
Application Examples:

Printers, Paper Feeds

Drawing:



Performance Curves:



Units in Metric