

Characteristics:

High Power DC motor

Specifications:

Dimensions	: Ø 48.0 X 68.0 mm
Shaft Diameter	: Ø 5.005 mm
Input Voltage	: 18.0 V DC
No Load Speed	: 22500 rpm
No Load Current	: 3.90 A
Stall Torque	: 1400.00 mNm
Stall Current	: 185.00 A
Maximum Output Power	: 830.00 W
Maximum Efficiency	: 76 %
Speed at Maximum Efficiency	: 19500 rpm
Life (typical)	: 150 hr
Weight	: 464 g
Operation Temperature	: -10 to 55 °C
Storage Temperature	: -20 to 80 °C
Electrical Connection	: Terminals
Certification	: Nil



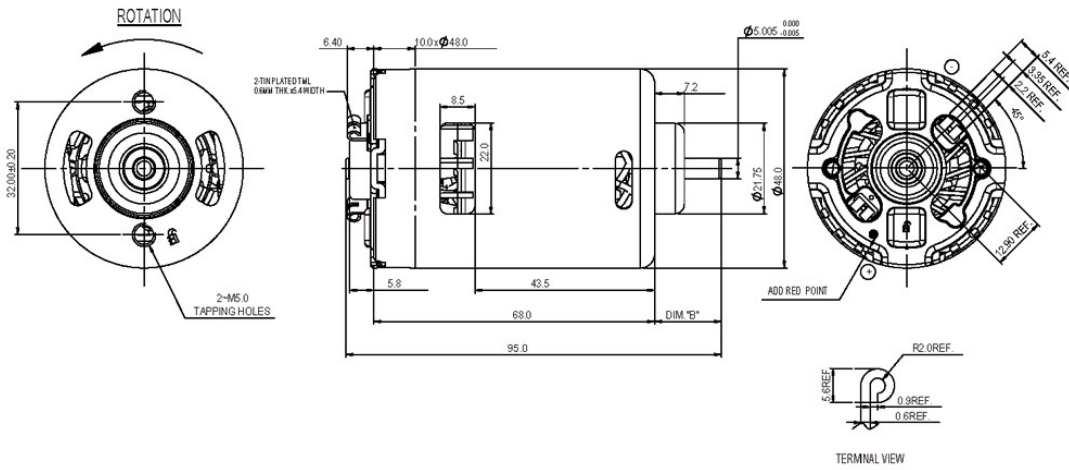
Performance Data:

	No Load	Stall	Max Efficiency	Max Power
Current (A)	3.90	185.00	26.81	93.98
Efficiency (%)	-	-	76	49
Output Power (W)	-	-	369.20	830.00
Speed (rpm)	22500	-	19500	11150
Torque (mNm)	-	1400.00	180.97	711.60

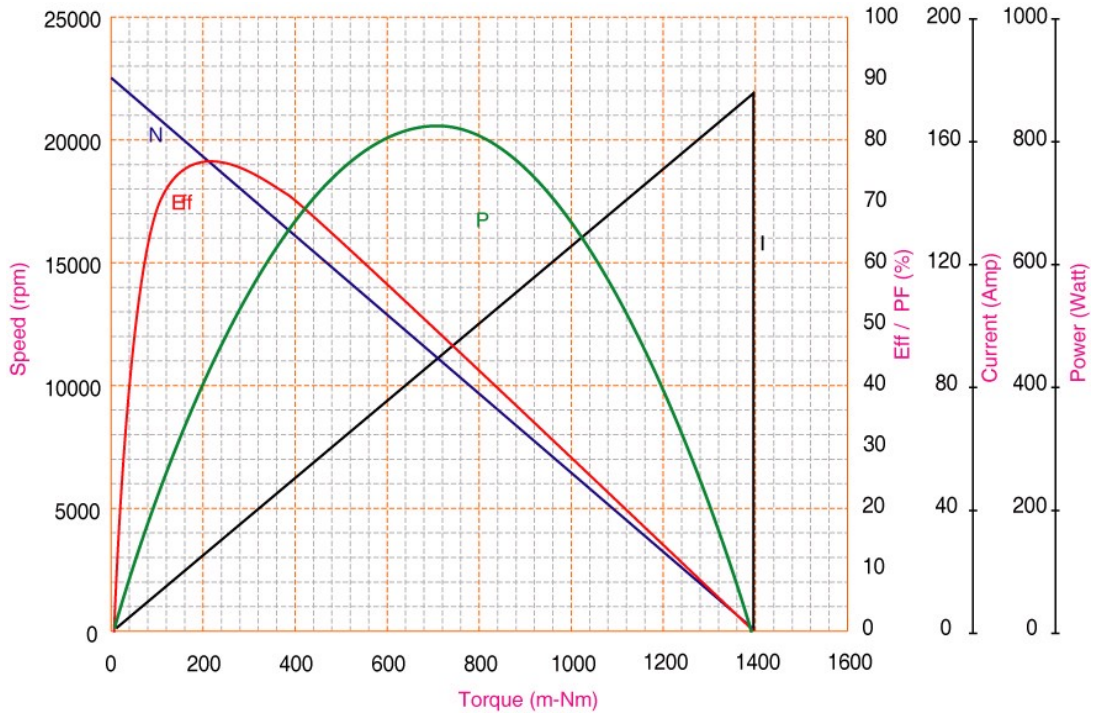
Application Examples:

Drills, Power Equipment

Drawing:



Performance Curves:



Units in Metric