

Characteristics:

High Power DC motor

Specifications:

Dimensions	: Ø 48.0 X 50.5 mm
Shaft Diameter	: Ø 4.005 mm
Input Voltage	: 14.4 V DC
No Load Speed	: 20120 rpm
No Load Current	: 3.80 A
Stall Torque	: 787.72 mNm
Stall Current	: 124.99 A
Maximum Output Power	: 415.00 W
Maximum Efficiency	: 66 %
Speed at Maximum Efficiency	: 17000 rpm
Weight	: 320 g
Operation Temperature	: -10 to 55 °C
Storage Temperature	: -20 to 80 °C
Electrical Connection	: Lead wire



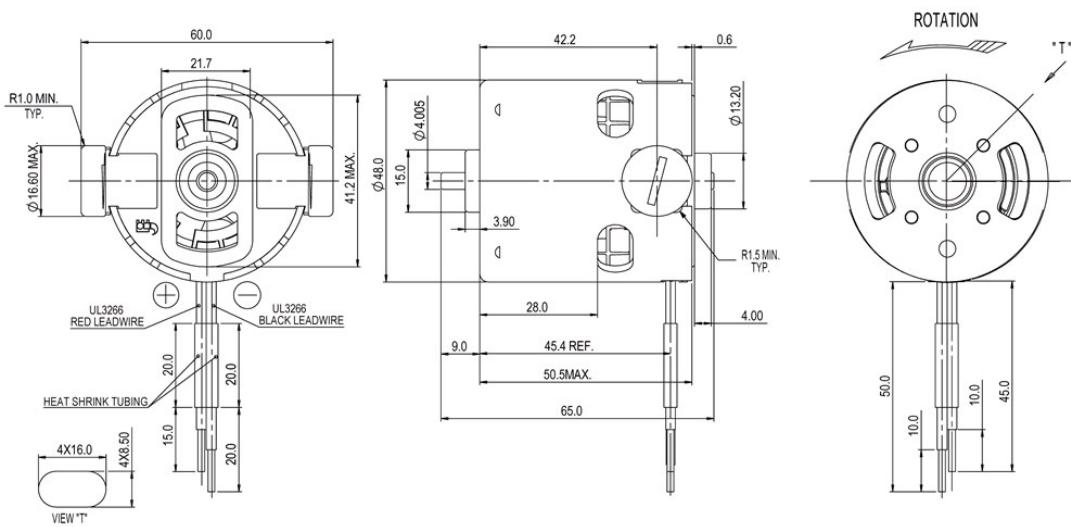
Performance Data:

	No Load	Stall	Max Efficiency	Max Power
Current (A)	3.80	124.99	21.78	64.39
Efficiency (%)	-	-	66	-
Output Power (W)	-	-	209.86	415.00
Speed (rpm)	20120	-	17134	10060
Torque (mNm)	-	787.72	116.91	393.86

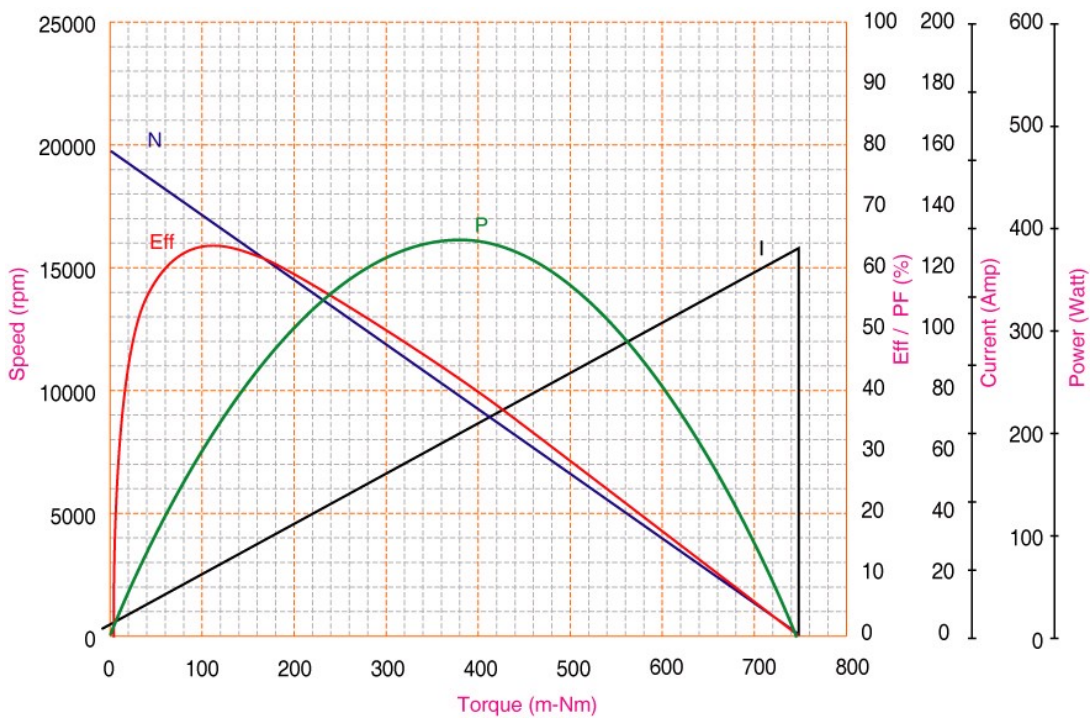
Application Examples:

Drills, Power Equipment

Drawing:



Performance Curves:



Units in Metric