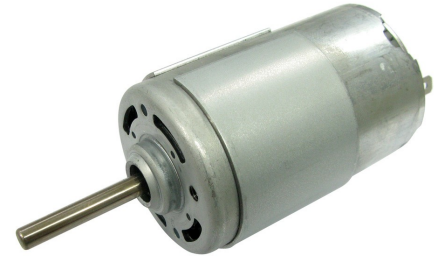


Characteristics:

High Reliability, High Torque, Low Cogging

Specifications:

Dimensions	: Ø 42.2 X 66.0 mm
Shaft Diameter	: Ø 5.005 mm
Input Voltage	: 18.0 V DC
No Load Speed	: 2840 rpm
Stall Torque	: 351.20 mNm
Maximum Output Power	: 26.14 W
Maximum Efficiency	: 69 %
Operation Temperature	: -10 to 50 °C
Storage Temperature	: -20 to 80 °C
Electrical Connection	: Terminal



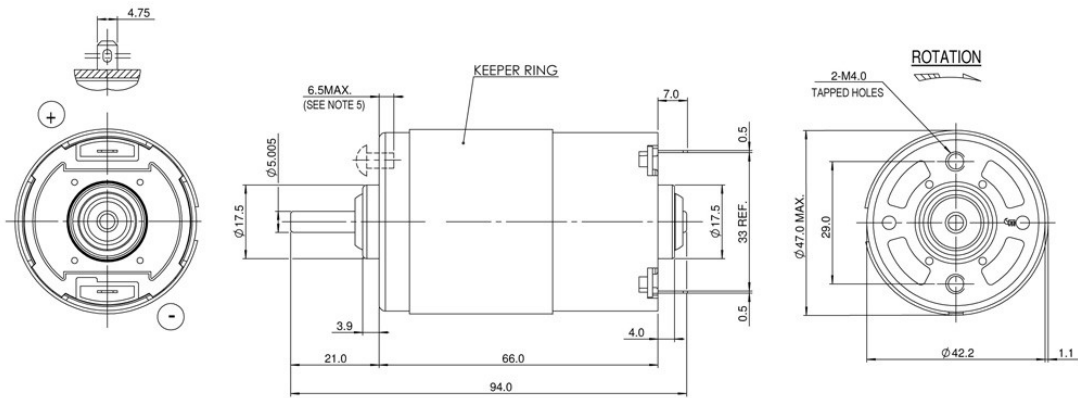
Performance Data:

	No Load	Stall	Max Efficiency	Max Power
Current (A)	0.19	60.84	1.07	3.14
Efficiency (%)	-	-	69	46
Output Power (W)	-	-	13.30	26.14
Speed (rpm)	2840	-	2418	1421
Torque (mNm)	-	-	52.50	175.60

Application Examples:

Paper Feeds

Drawing:



Performance Curves:



Units in Metric