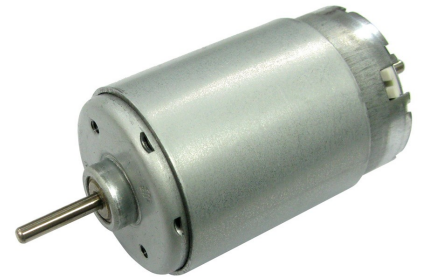


## Characteristics:

High Reliability, High Torque, Low Cogging

## Specifications:

Dimensions	: Ø 35.8 X 57.0 mm
Shaft Diameter	: Ø 3.175 mm
Input Voltage	: 24.0 V DC
No Load Speed	: 5350 rpm
Stall Torque	: 334.10 mNm
Maximum Output Power	: 46.80 W
Maximum Efficiency	: 77 %
Operation Temperature	: -10 to 50 °C
Storage Temperature	: -20 to 80 °C
Electrical Connection	: Terminal



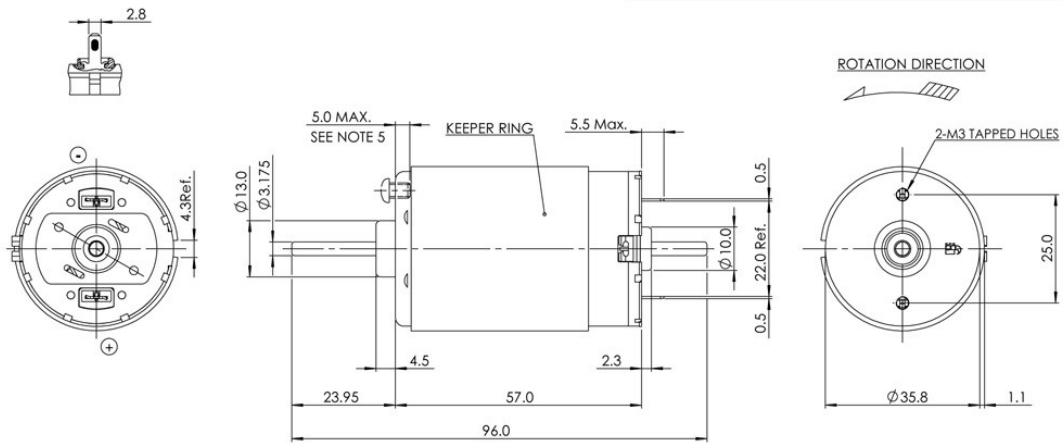
## Performance Data:

	No Load	Stall	Max Efficiency	Max Power
Current (A)	0.14	7.95	1.04	4.04
Efficiency (%)	-	-	77	48
Output Power (W)	-	-	19.21	46.81
Speed (rpm)	5350	-	4731	2675
Torque (mNm)	-	334.10	38.77	167.00

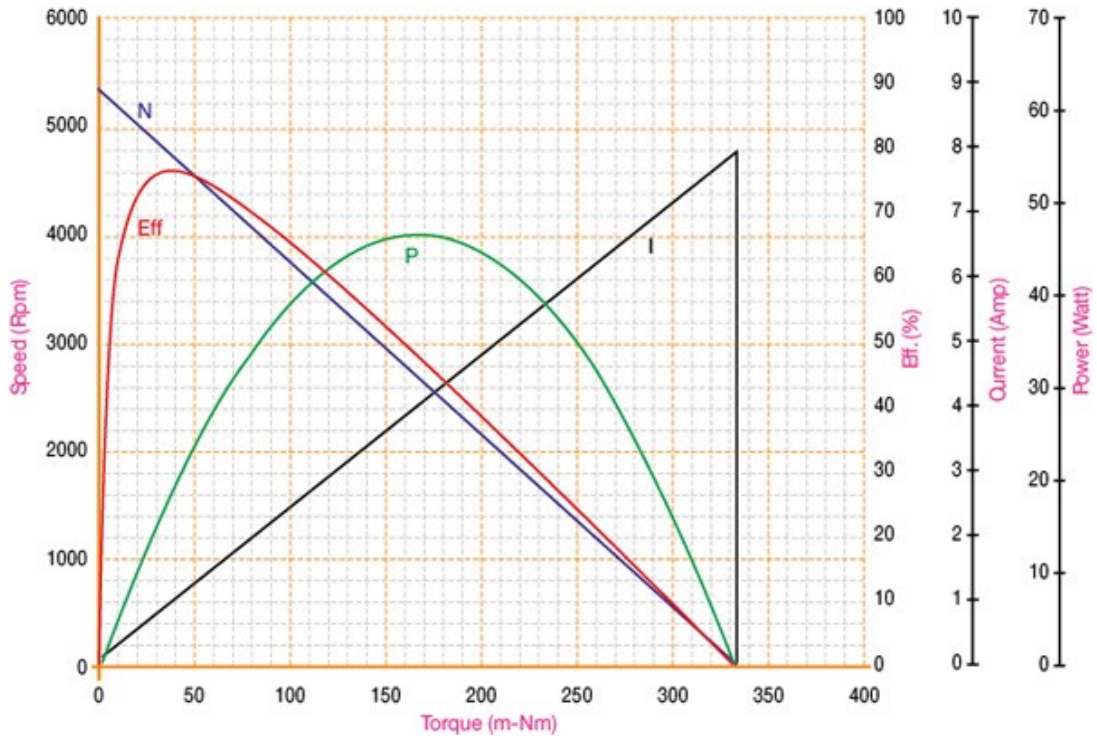
## Application Examples:

Paper Feeds

Drawing:



Performance Curves:



Units in Metric