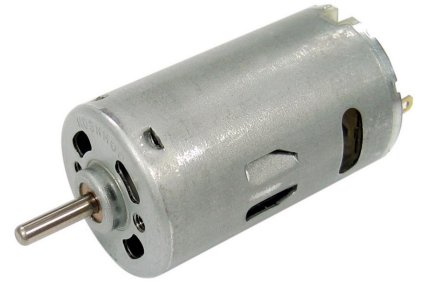


Characteristics:

High Power DC motor

Specifications:

| | |
|------------------------------|--------------------|
| Dimensions | : Ø 27.5 X 46.5 mm |
| Shaft Diameter | : Ø 2.305 mm |
| Input Voltage | : 36.0 V DC |
| No Load Speed | : 11000 rpm |
| No Load Current | : 0.10 A |
| Nominal Speed | : 9700 rpm |
| Nominal Torque | : 13.00 mNm |
| Nominal Current | : 0.50 A |
| Stall Torque | : 90.00 mNm |
| Stall Current | : 3.00 A |
| Maximum Output Power | : 25.00 W |
| Maximum Efficiency | : 70 % |
| Torque at Maximum Efficiency | : 12.00 mNm |
| Speed at Maximum Efficiency | : 9500 rpm |
| Life (typical) | : 150 hr |
| Weight | : 90 g |
| Operation Temperature | : -10 to 55 °C |
| Storage Temperature | : -20 to 80 °C |
| Electrical Connection | : terminals |



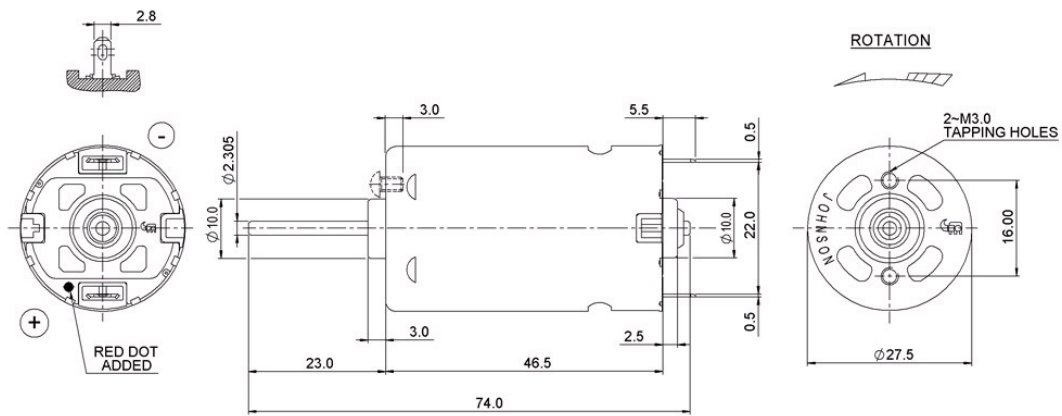
Performance Data:

| | No Load | Stall | Max Efficiency | Max Power |
|------------------|---------|-------|----------------|-----------|
| Current (A) | 0.10 | 3.00 | 0.45 | 1.50 |
| Efficiency (%) | - | - | 70 | 45 |
| Output Power (W) | - | - | 12.00 | 25.00 |
| Speed (rpm) | 11000 | - | 9500 | 5500 |
| Torque (mNm) | - | 90.00 | 12.00 | 45.00 |

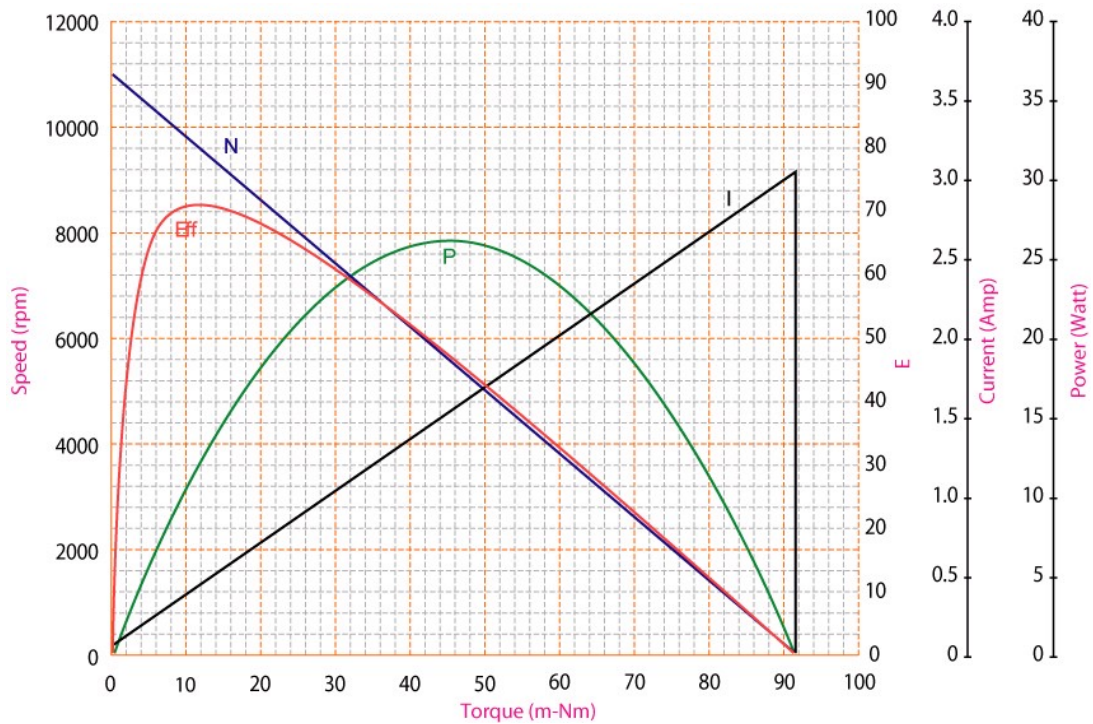
Application Examples:

Foot Massagers

Drawing:



Performance Curves:



Units in Metric