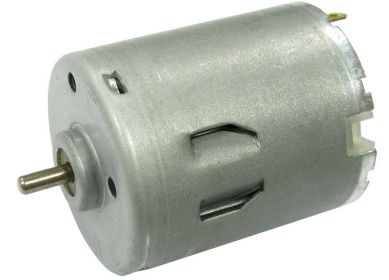


Characteristics:

Compact size, Low noise, low cogging

Specifications:

Dimensions	: Ø 27.5 X 32.5 mm
Shaft Diameter	: Ø 2.305 mm
Input Voltage	: 18.0 V DC
No Load Speed	: 9440 rpm
Stall Torque	: 45.53 mNm
Maximum Output Power	: 10.76 W
Maximum Efficiency	: 54 %
Operation Temperature	: -10 to 50 °C
Storage Temperature	: -20 to 80 °C
Electrical Connection	: Terminal



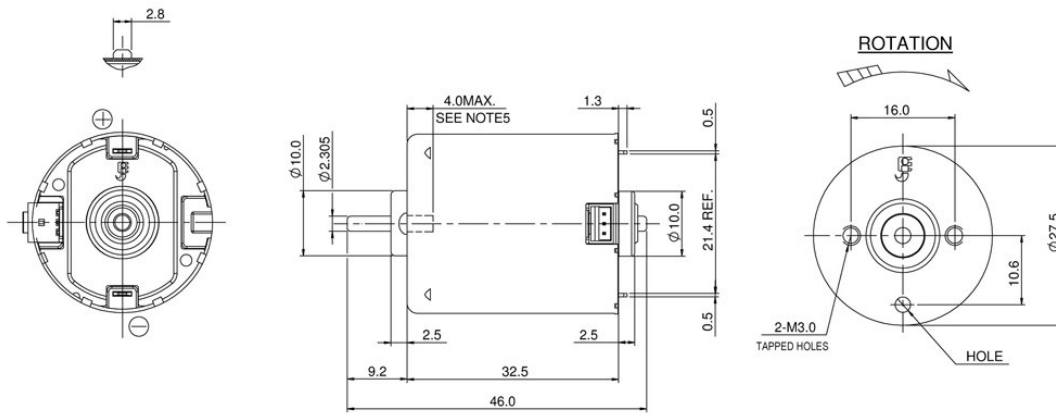
Performance Data:

	No Load	Stall	Max Efficiency	Max Power
Current (A)	0.17	2.85	0.69	1.51
Efficiency (%)	-	-	54	40
Output Power (W)	-	-	6.78	10.76
Speed (rpm)	9440	-	7593	4720
Torque (mNm)	-	43.53	8.53	21.77

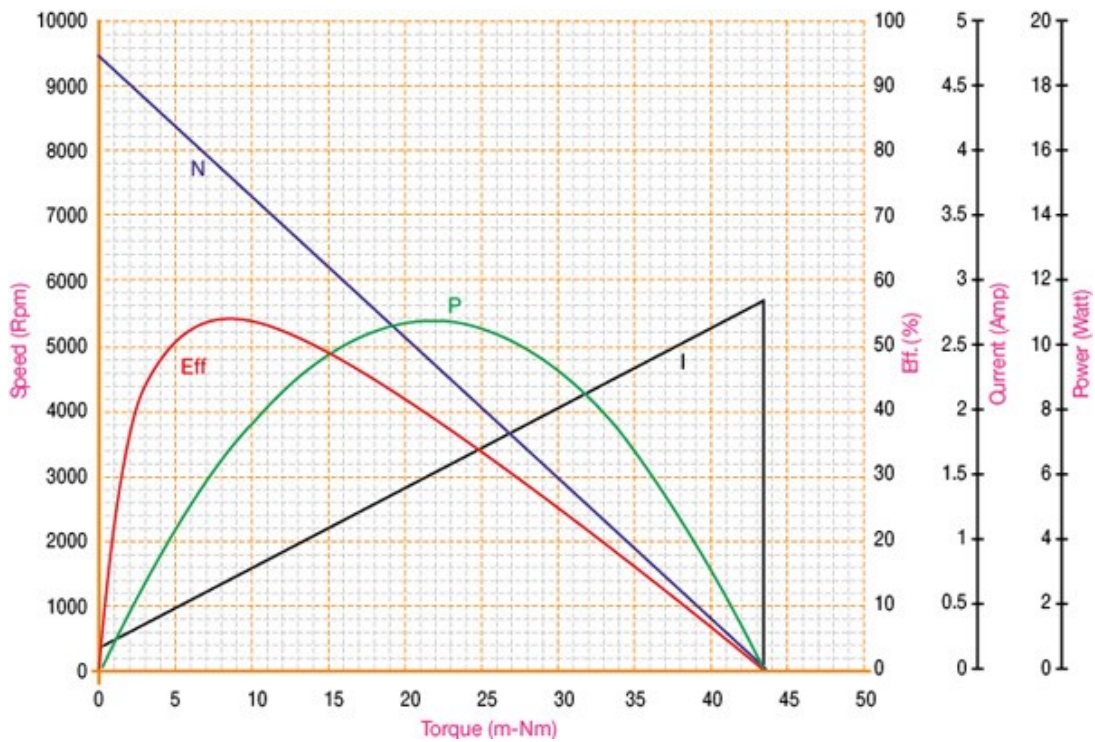
Application Examples:

Paper Picks, Paper Feeds

Drawing:



Performance Curves:



Units in Metric