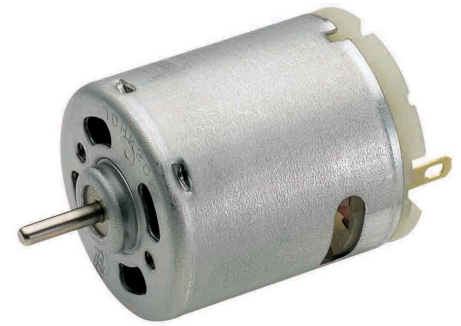


Characteristics:

High Power DC motor

Specifications:

Dimensions	: Ø 27.5 X 32.5 mm
Shaft Diameter	: Ø 2.305 mm
Input Voltage	: 41.0 V DC
No Load Speed	: 18000 rpm
No Load Current	: 0.05 A
Nominal Speed	: 16500 rpm
Nominal Torque	: 2.50 mNm
Nominal Current	: 0.18 A
Stall Torque	: 38.00 mNm
Stall Current	: 2.00 A
Maximum Output Power	: 18.00 W
Maximum Efficiency	: 65 %
Torque at Maximum Efficiency	: 6.00 mNm
Speed at Maximum Efficiency	: 15000 rpm
Life (typical)	: 150 hr
Weight	: 50 g
Operation Temperature	: -10 to 55 °C
Storage Temperature	: -20 to 80 °C
Electrical Connection	: terminals



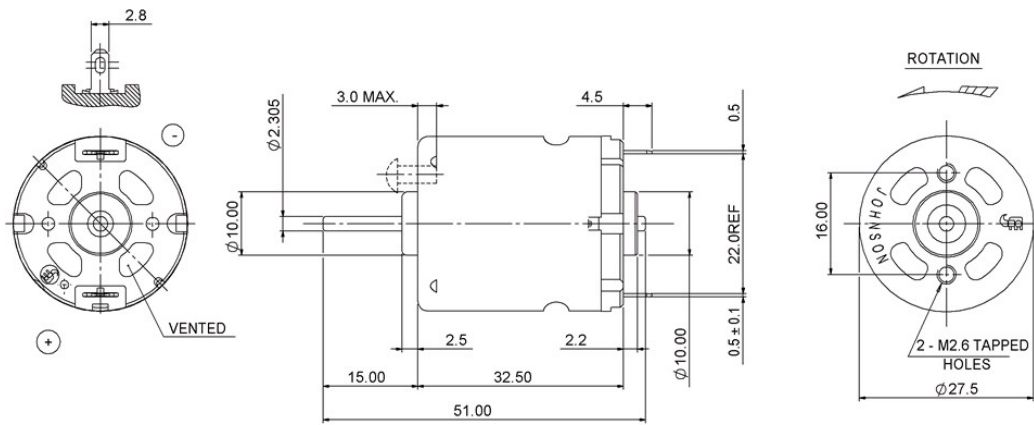
Performance Data:

	No Load	Stall	Max Efficiency	Max Power
Current (A)	0.05	2.00	0.35	1.00
Efficiency (%)	-	-	65	45
Output Power (W)	-	-	10.00	18.00
Speed (rpm)	18000	-	15000	9000
Torque (mNm)	-	38.00	6.00	20.00

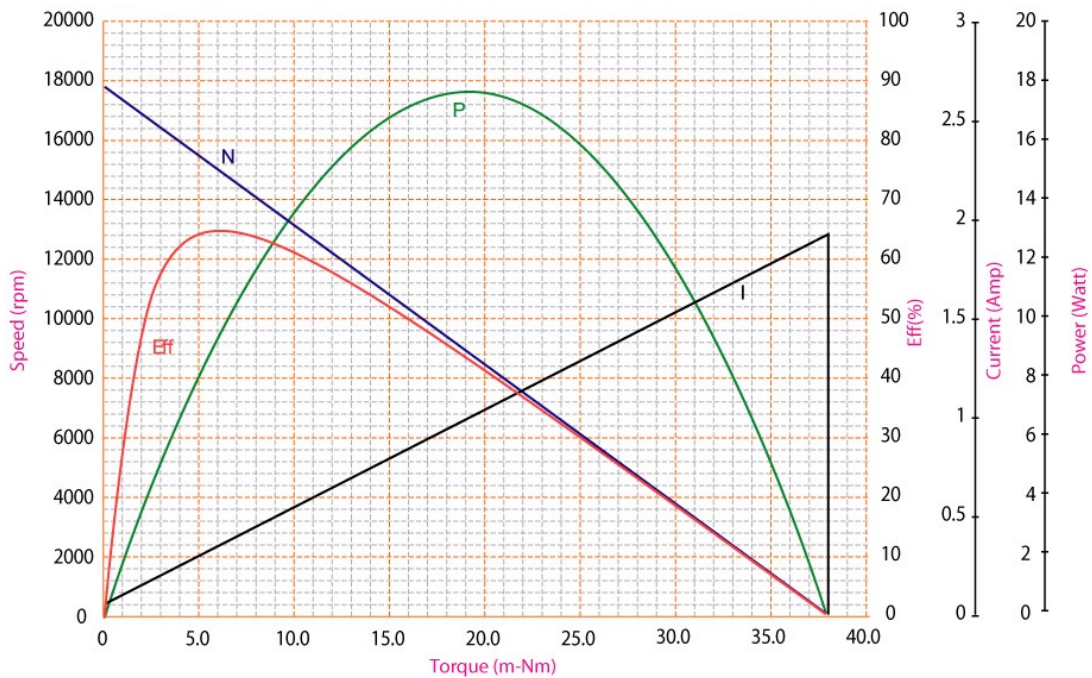
Application Examples:

Massagers

Drawing:



Performance Curves:



Units in Metric