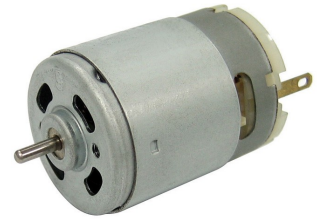


Characteristics:

High Power PMDC motor

Specifications:

Dimensions	: Ø 27.5 X 38.0 mm
Shaft Diameter	: Ø 2.305 mm
Input Voltage	: 4.8 V DC
No Load Speed	: 22938 rpm
No Load Current	: 1.43 A
Stall Torque	: 100.25 mNm
Stall Current	: 57.63 A
Maximum Output Power	: 60.23 W
Maximum Efficiency	: 65 %
Torque at Maximum Efficiency	: 13.88 mNm
Speed at Maximum Efficiency	: 19817 rpm
Weight	: 75 g
Operation Temperature	: -10 to 50 °C
Storage Temperature	: -20 to 80 °C
Electrical Connection	: Terminals



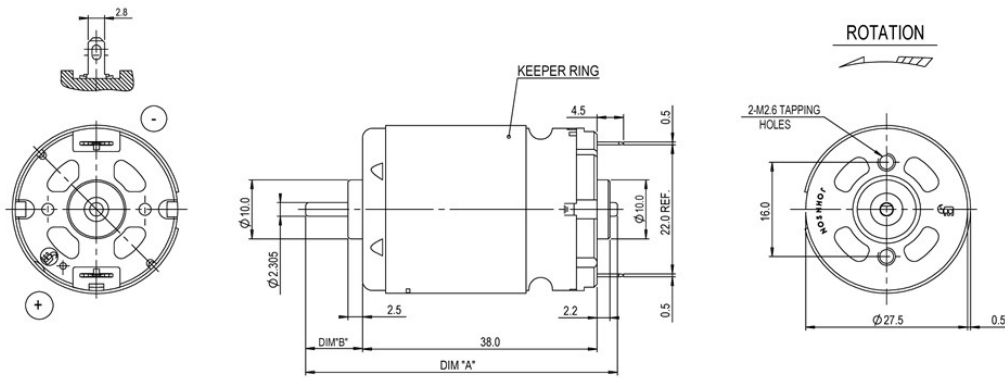
Performance Data:

	No Load	Stall	Max Efficiency	Max Power
Current (A)	1.43	57.63	9.08	29.53
Efficiency (%)	-	-	65	-
Output Power (W)	-	-	28.32	60.23
Speed (rpm)	22938	-	19817	11469
Torque (mNm)	-	100.25	13.64	50.13

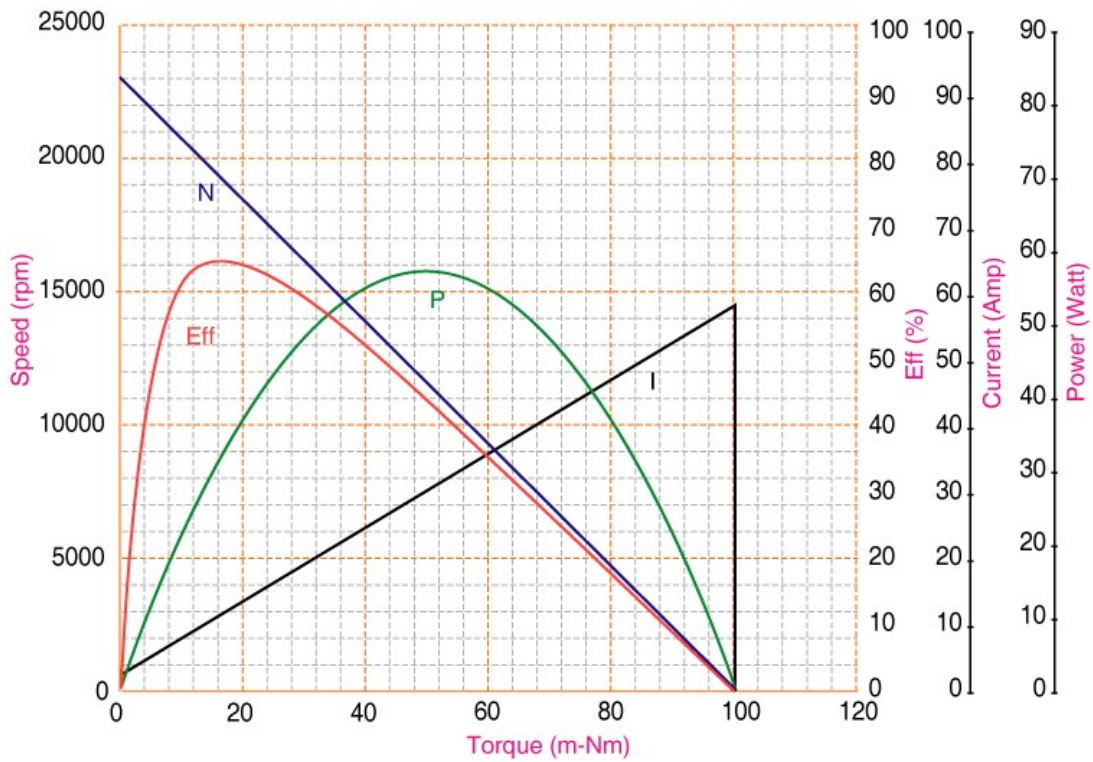
Application Examples:

Screw Drivers

Drawing:



Performance Curves:



Units in Metric