

Characteristics:

High Power HVDC Motor

Specifications:

Dimensions	: Ø 45.0 X 67.5 mm
Shaft Diameter	: Ø 5.005 mm
Input Voltage	: 230.0 V DC , Rectified , 50 Hz
No Load Speed	: 15600 rpm
No Load Current	: 0.11 A
Maximum Efficiency	: 65 %
Torque at Maximum Efficiency	: 92.00 mNm
Speed at Maximum Efficiency	: 11500 rpm
Life (typical)	: 60 hr
Weight	: 413 g
Operation Temperature	: -10 to 55 °C
Storage Temperature	: -20 to 80 °C
Electrical Connection	: terminals
Certification	: VDE, CCC

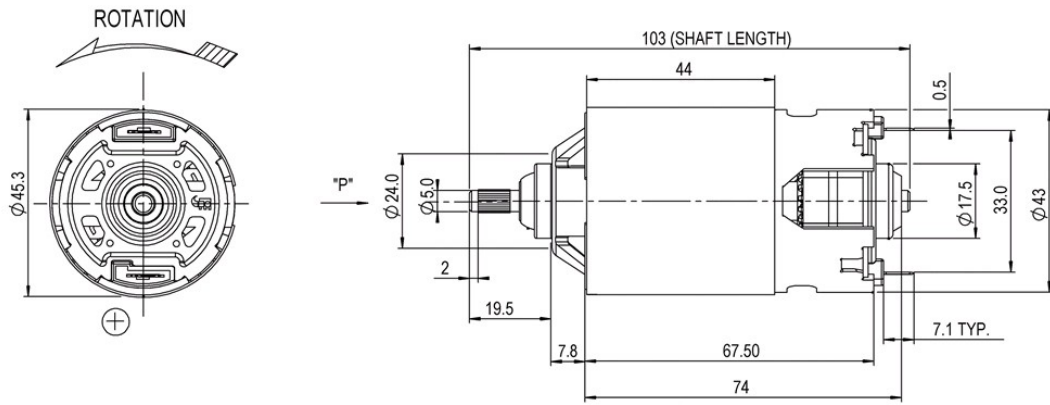
**Performance Data:**

	No Load	Max Efficiency	Max Power
Current (A)	0.11	0.86	1.94
Efficiency (%)	-	65	47
Output Power (W)	-	113.00	200.00
Speed (rpm)	15600	11500	7200
Torque (mNm)	-	92.31	270.00

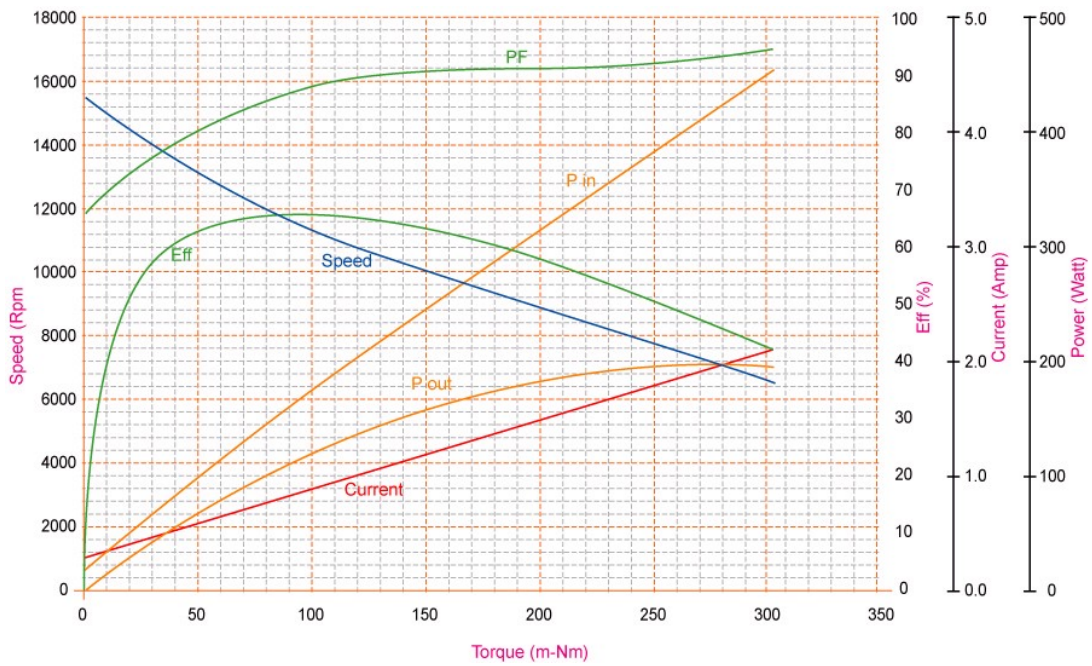
Application Examples:

Hand Mixers, Stick Blenders

Drawing:



Performance Curves:



Units in Metric