

## Gearboxes

### VK 4

Dimensions (mm)	∅ 52
Hight (mm)	20
Max. torque (cNm)	40
Ratios	6 1/4 ... 3750
Internal slipping clutch	–
Standard shaft (mm)	∅ 3 x 10
Motor combination	3532 RG, 5021–, 5022–, 5032 RG– series



### Standard Data

Mounting	any position
Max. input speed *	3000 min <sup>-1</sup>
Max. output torque *	40 cNm
Max. input -and output power *	depends on ratio, Tab.: Ratio VK 4
Average back lash	2° (unloaded)
Max. axial force F <sub>A</sub>	5 N
Max. lateral force, up 5 mm flange F <sub>e</sub>	80 N
Max. axial play	0,3 mm
Max. radial play	20 μm
Working temperature	0 ... +50 °C
Ambient temperature operation	–20 ... +80 °C
Ambient temperature storage	–40 ... +100 °C

Ratio	6 1/4	12 1/2	18 3/4	37 1/2	93 3/4	125	150	187 1/2	375	750	1500
-------	-------	--------	--------	--------	--------	-----	-----	---------	-----	-----	------

\* Depends on ratio

### Order Reference

Type	Gearbox	VK 4	6 1/4	1
Ratio	6 1/4			
shaft end	1	see drawings Dimension shaft end types		
	2			
	3			
optional	motor pinion: see page Motor Pinion Data (107)			

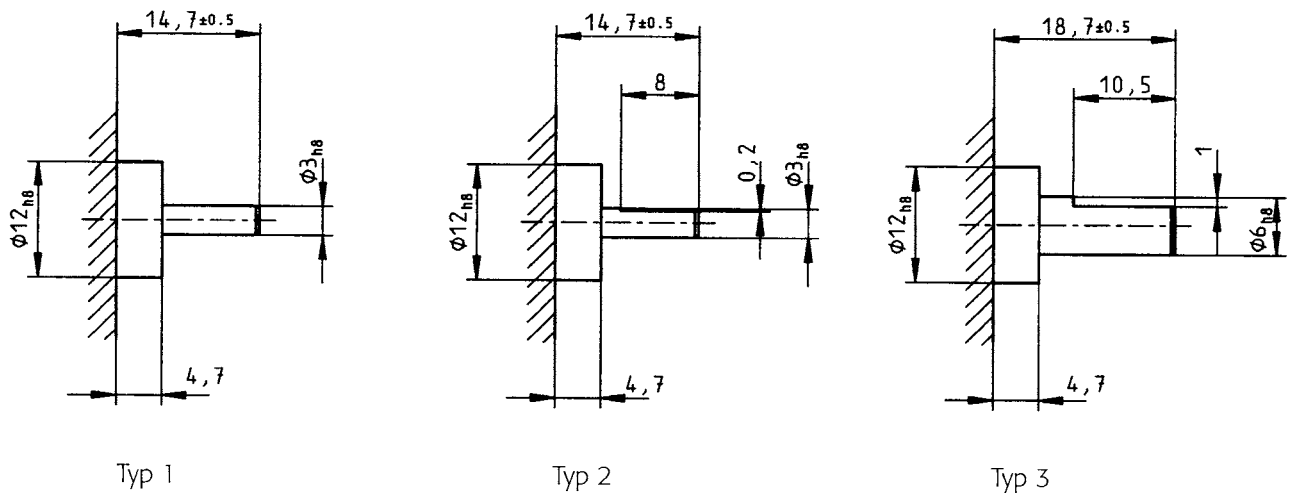
Technical Data

Ratio	Stages *	$\eta$	pinion type	Weight	Input power ** max. (W)	Outout Power max. (W)
6 <sup>1</sup> / <sub>4</sub>	2	0.81	1	45	1.7	1.4
12 <sup>1</sup> / <sub>2</sub>	2	0.71	1	45	1.7	1.4
18 <sup>3</sup> / <sub>4</sub>	3	0.73	1	50	1.7	1.2
37 <sup>1</sup> / <sub>2</sub>	3	0.73	1	50	1.7	1.2
93 <sup>3</sup> / <sub>4</sub>	4	0.65	1	55	1.7	1.1
125	4	0.65	1	55	1.54	1
150	4	0.65	1	55	1.29	0.84
187 <sup>1</sup> / <sub>2</sub>	5	0.59	1	60	1.14	0.67
375	5	0.59	1	60	0.58	0.34
750	6	0.53	1	65	0.32	0.17
1500	6	0.53	1	65	0.15	0.08

\* Direction of rotaton of output- and motor-shaft at 2,4 and 6 stages - same  
3 and 5 stages - opposite

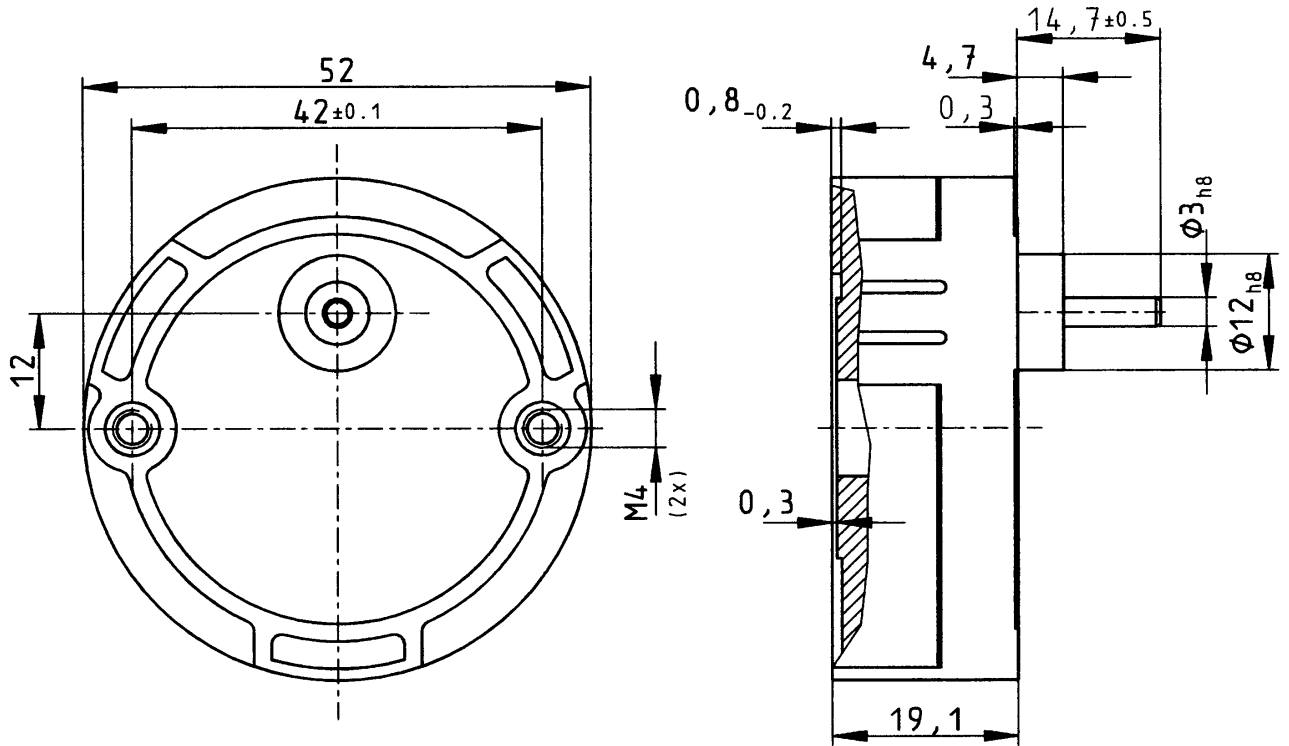
\*\* In combination with max. input speed / max. input torque  
Technical Data valid for a working temperature 0 °C ... +50 °C

Dimensions Shaft end types VK 4



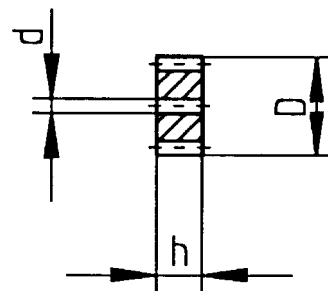
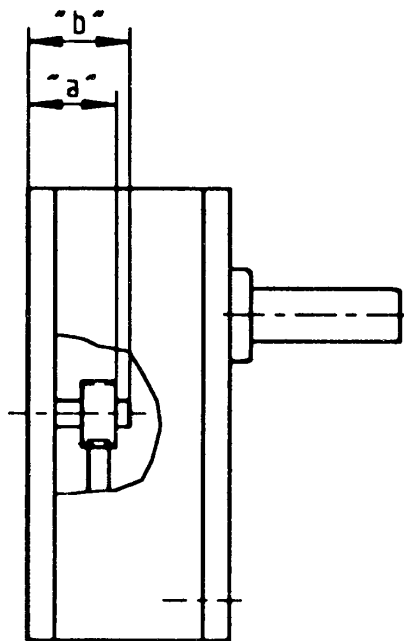
# VK 4

Dimensions



**Motor Pinion Data VK 4**

pinion type	d	h	D	module	no. of teeth	Order Reference
1	1,5 <sup>S8</sup>	3,5	5,76	0,3	16	022-100-006-260
	2,0 <sup>S8</sup>	3,5	5,76	0,3	16	022-100-006-270
	2,3 <sup>S8</sup>	3,5	5,76	0,3	16	022-100-006-280
	2,5 <sup>S8</sup>	3,5	5,76	0,3	16	022-100-006-290
	3,0 <sup>S8</sup>	3,5	5,76	0,3	16	022-100-006-300



pinion position	Dimension	„a“	„b“
2 gear stages		8,6-0.2	16
3-5 gear stages		5,9-0.2	16
6 gear stages		8,6-0.2	16