

STG 200

Gearboxes

STG 200

| | |
|--------------------------|---|
| Dimensions (mm) | 70 x 130 |
| Height (mm) | 38 |
| Max. torque (cNm) | 2000 |
| Ratios | 6 ¹ / ₄ ... 375 |
| Internal slipping clutch | – |
| Standard shaft (mm) | ∅ 12 x 35 |
| Motor combination | 5021–, 5022–, 5032 RG–, 6443–, 6444– series |



Standard Data

| | |
|---|---|
| Mounting | any position |
| Max. input speed * | 3000 min ⁻¹ |
| Max. output torque * | 2000 cNm |
| Max. input -and output power * | please refer to table in Technical Data |
| Average back lash | unload 0,75° |
| | 2/3 stages with 4/10 Nm 1,25° |
| | 4/5 stages with 15/20 Nm 2° |
| Max. axial force F _A | 60 N |
| Max. lateral force, up 5 mm flange F _e | 80 N |
| Max. axial play | 0,3 mm |
| Max. radial play | 83 µm |
| Working temperature | 0 ... +50 °C |
| Ambient temperature operation | –20 ... +80 °C |
| Ambient temperature storage | –40 ... +100 °C |

Ratio

6¹/₄ 12¹/₂ 25 37¹/₂ 62¹/₂ 75 93³/₄ 125 375

* Depends on ratio

Order Reference

| | | | |
|----------|--|---------|-------------------------------|
| Type | Gearbox | STG 200 | 6 ¹ / ₄ |
| Ratio | 6 ¹ / ₄ | | |
| optional | motor pinion: see page Motor Pinion Data (115) | | |

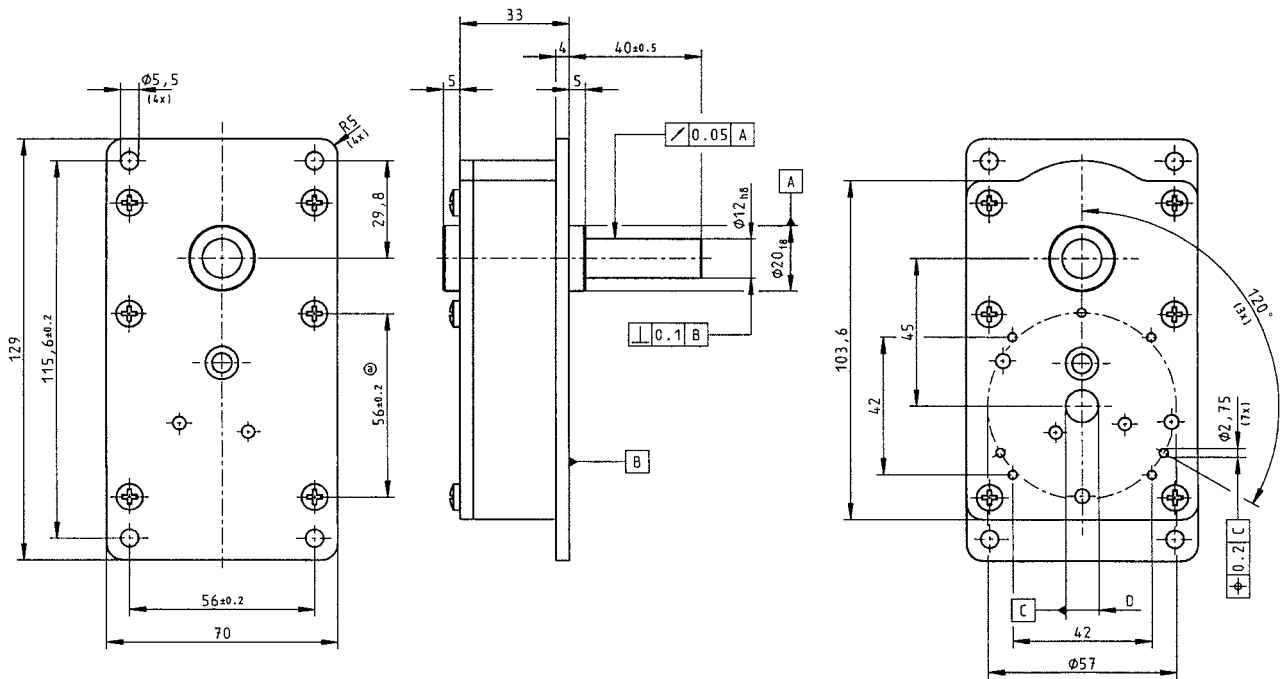
Technical Data

| Ratio | Stages * | η | pinion type | Weight | Input power ** max. (W) | Outout Power max. (W) |
|--------------------------------|----------|--------|-------------|--------|----------------------------|--------------------------|
| 6 ¹ / ₄ | 2 | 0,81 | 1 | 560 | 28,3 | 22,7 |
| 12 ¹ / ₂ | 2 | 0,81 | 2 | 560 | 28,3 | 22,7 |
| 25 | 3 | 0,73 | 3 | 580 | 28,3 | 20,8 |
| 37 ¹ / ₂ | 3 | 0,73 | 4 | 580 | 28,3 | 20,8 |
| 62 ¹ / ₂ | 4 | 0,65 | 5 | 600 | 28,3 | 18,4 |
| 75 | 4 | 0,65 | 6 | 600 | 28,3 | 18,4 |
| 93 ³ / ₄ | 4 | 0,65 | 6 | 600 | 28,3 | 18,3 |
| 125 | 4 | 0,65 | 6 | 600 | 28,3 | 18,3 |
| 375 | 5 | 0,59 | 4 | 620 | 28,3 | 16,8 |

* Direction of rotaton of output- and motor-shaft at 2 and 4 stages - same
3 and 5 stages - opposite

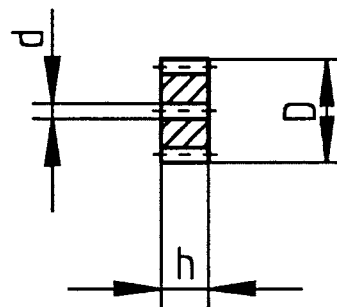
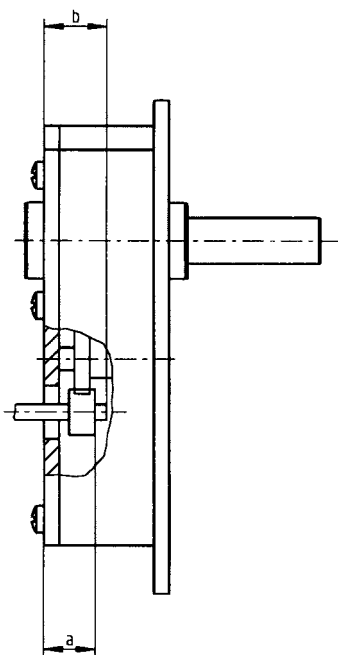
** In combination with max. input speed / max. input torque
Technical Data valid for a working temperature 0 °C ... +50 °C

Dimensions



Motor Pinion Data

| pinion type | d | h | D | module | no. of teeth | Order Reference |
|-------------|-------------------|------|-------|--------|--------------|-----------------|
| 1 | 4,0 ^{S7} | 11,5 | 12,65 | 0,56 | 20 | 022-100-020-100 |
| | 5,0 ^{S7} | 11,5 | 12,65 | 0,56 | 20 | 022-100-020-110 |
| 2 | 4,0 ^{S7} | 11,5 | 9,11 | 0,53 | 14 | 022-100-020-130 |
| | 5,0 ^{S7} | 11,5 | 9,11 | 0,53 | 14 | 022-100-020-140 |
| 3 | 3,0 ^{S7} | 6,8 | 12,02 | 0,75 | 18 | 022-100-020-200 |
| | 4,0 ^{S7} | 6,8 | 12,02 | 0,75 | 18 | 022-100-020-210 |
| | 5,0 ^{S7} | 6,8 | 12,02 | 0,75 | 18 | 022-100-020-220 |
| 4 | 3,0 ^{S7} | 6,8 | 9,32 | 0,5 | 16 | 022-100-020-280 |
| | 4,0 ^{S7} | 6,8 | 9,32 | 0,5 | 16 | 022-100-020-290 |
| | 5,0 ^{S7} | 6,8 | 9,32 | 0,5 | 16 | 022-100-020-300 |
| 5 | 3,0 ^{S7} | 11,5 | 9,82 | 0,38 | 24 | 022-100-020-360 |
| | 4,0 ^{S7} | 11,5 | 9,82 | 0,38 | 24 | 022-100-020-370 |
| | 5,0 ^{S7} | 11,5 | 9,82 | 0,38 | 24 | 022-100-020-380 |
| 6 | 3,0 ^{S7} | 11,5 | 9,32 | 0,5 | 16 | 022-100-020-400 |
| | 4,0 ^{S7} | 11,5 | 9,32 | 0,5 | 16 | 022-100-020-410 |
| | 5,0 ^{S7} | 6,8 | 9,32 | 0,5 | 16 | 022-100-020-300 |



| pinion position | Dimension | „a“ | „b“ max. | „b“ min. |
|-----------------|-----------|----------------------|----------|--------------------|
| 2 gear stages | | 16,1 _{-0,2} | 28 | 10 |
| 3 gear stages | | 10,3 _{-0,2} | 10,3 | 8,1 |
| 4 gear stages | | 15,1 _{-0,2} | 15 | 8,1 (13,5 bei Ø 5) |
| 5 gear stages | | 10,9 _{-0,2} | 11 | 8,1 |